



RONIX
WAKEBOARDS // MEN'S EDITION 2011

DANNY HART ONE COLLECTION

RIDING STYLE // The defending champion WSLA innovation of the year - the One Boot - started the trend of lightweight low-pro footwear design with our exclusive medium density heat formed baseless boots. A blend of quick response from a rider to the board, and enough mobility for Danny to poke out his nose grab backside 7 off the double up. The freeride foundation of our line links mellow transitioned arcs, strong edge hold up the wake from the original variable rail design, and a classic 3-stage lift off the kicker. The best selling collection comes complete with our exclusive Mod Pour foam, Carbon R3 Technology, Krypto Cable, and an optional jib friendly Sintered Base on our All Terrain Ride Edition.





RIDING STYLE //

A unique snap off the wake that comes from a board that has more surface area than the rest of our signature decks. Parks Bonifay toned down his super charged 3-stage rocker series, and went to a wider profile that doesn't require as much speed to take advantage of a more vertical kick off the wake. A super stable profile, forgiving variable rail, mixed with our revolutionary heat formed baseless boot, which offers the most in side to side mobility. A custom orthotic line of footwear with dynamic lateral movement, and the most consistent signature 3-stage Parks kick we have ever designed.

THE TYPE VÖRN COLLECTION

BY PARKS BONIFAY

Parks Documentary
A video spanning 27 years covering
arguably our sport's most iconic figure.
Winner of the best documentary at the X Dance Film Festival.
Available at ronixstore.com





CHAD SHARPE IS

THE VIVA COLLECTION

RIDING STYLE //

We went back to our roots with Chad's new board, a hard rail, sharp bevel, and more sidecut for riders that don't have a lot of extra time. A board you gain confidence with as you get on the gas. Chad's quick hybrid rocker combines the speed needed to make any wake transfer seem effortless, with more kick than a traditional continuous rocker. A fast new shape, with a stiff new heat moldable boot that delivers more response between the rider and board.



HELLO
MY
NAME
IS COLLECTION

Uber Discoteca

RIDING STYLE //
A COLLABORATION BETWEEN RONIX AND OUR SHARPLY TUNED DISCO FRIENDS - BILL AND FRANK. THIS BOARD
AND BOOT WILL ENHANCE ANY RIDER'S QUIVER WITH A SKATE INSPIRED DRIFT ON THE WATER, OR RAILSLIDE CABLE
PARK ENCHANTMENT. NO OBSTACLE IS SAFE WITH OUR JIB FRIENDLY BASE MATERIAL IN THIS LIVELY, VERSATILE
SHREDDING DEVICE. A PROGRESSIVE SHAPE FOR THE NEXT GENERATION OF RIDERS WITH BIGGER WAKES, FASTER
BOAT SPEEDS AND LONGER ROPE LENGTHS IN MIND. AN AQUATIC FABRICATION RIDDEN BY ADAM ERRINGTON.

See what Bill & Frank have concocted on pages 28-29



PHOENIX PROJECT

OUTCOME OF AN IMPROBABLE PAST

A COLLABORATION BETWEEN PAI PANAKOS & ERIK RUCK

RIDING STYLE //

Our 5th project...explore a new way to ride a board - featuring stored energy. Requiring a tail heavy approach to experience a different pop off the wake than any board out there. Session your favorite lake, or local cable park with a new mindset of how a board feels on and off the water, and what's possible. Not sure if you have a weight shifted back style of riding with a later kick off the wake? No problem you will just notice a mellower lift with the most forgiving landing of any deck in the Ronix line.

See more of the Phoenix Project on pages 30-31

Board & Boot

101

An easy guide for any rider to determine what setup is right for them.

Every boot was made with a certain amount of flex, and every board with a specific riding style and snap off the wake from its own unique construction/energy.



Late Arc/High Degree Rocker Line

An exaggerated rocker line with a later arc, and a higher degree provide a more straight up explosive pop. This style of rocker creates more of a instant explosive buck off the wake (combine it with our Carbon R3 to experience everything a wake has to offer), for riders that go behind a big boat wake. Wakeboarders riding behind smaller wakes will still feel like they are getting a solid vertical kick.

ROCKER LINES

The terms 3-stage and continuous are becoming ambiguous, as these styles of arcs continue to blend closer together and in some cases it's hard to determine the difference. We measure where the arc takes place, and the degree of angle, and put the specs for each series on their respective board page.

Rocker Location - Late or Early Arc - This has to do with where the transition of the rocker line happens relative to the center of board. If it happens closer to the center - early arc. Closer to the tip/tail - late arc.

Rocker Degree - High or Mellow Degree - In addition to where the rocker happens, equally as important is how much is happening. We measure the degree of every rocker line relative to a flat surface area. So a higher degree has more angle to the arc of the board. Less degree has a mellower/smoothen angle.

Early Arc/Medium Degree Rocker Line

An earlier arc with a mellower degree will have a smoother, more consistent glide up the wake. A rider will be able to carry more speed up the transition and land tricks further out into the flats. Not quite the straight up snap of its counterpart, but a rider will have a faster, more predictable, effortless take off.

ONE
ATR

ONE
standard

MANA

BILL

IBEX
ATR

IBEX
standard

VIVA
ATR

VIVA
standard

DISTRICT
VAULT

FAITH HOPE LOVE

QUARTER 'TIL MIDNIGHT
KRUSH / VISION / AUGUST

PHOENIX PROJECT

Every rider is different - so we encourage you to support your local pro shop and demo our latest line of goods.

Enjoy the ride.



Instant Energy

The energy takes place the second the tip of the board hits the wake. Riders like Danny, Parks and Chad want a carbon lay up board made extra stiff. A quicker way to generate lift off the transition as the energy takes place sooner, with a super solid snap off the wake. For riders that can handle the extra kick.

ENERGY

While other companies are worried about flex - all we're thinking about is energy. Flex doesn't mean anything - if you don't have energy. From making the first compression molded wakeboard in '91 to our first altered flex board in '04 'til now we have only been focused on improving the energy of a wakeboard. We have used countless foams, honeycomb, Balsa, and Maple wood all mixed with every concoction of glass and carbon we could get our hands on. Where does the board store energy, for how long, and where does it release it? Our 2011 line represents the most complete range of different woods, foams, carbon, glasses, and variations of directional layups for stored to instant energy boards - and everything in between.

Stored Energy

Riders like former World Champion Erik Ruck prefer a construction with this make up. A rider has to approach and leave the wake the way a snowboarder would a kicker or a skater would an ollie. The delay in the energy means the rider is given more time to generate the full lift from the power building from the tip all the way to the tail of the board. If riders don't have that snow/skate timing off the wake - no problem they will just have a mellower lift off the wake - a construction that won't kick your ass.



Flex Meter

Every Ronix boot is geared towards a different style. Some riders want a board/boot connection that reacts as quickly as they can control it. With a stiffer boot there is an instant reaction when a rider's weight shifts to the board's transferring edge. While others want the feel of our softer boots with more lateral movement, giving a rider more freedom to poke out their methods, or exaggerate their nose press on their new Phoenix Project.

We have rated all of our boots from a 10 - 1 scale to make your choice easier.



10 - Stiffer/Responsive

9 - Cell

8 - One/Kai OT

7 - Frank/Kai CT/Halo

6 - Relik/District/Faith Hope Love

5 - Divide/Vision

4 - Luxe

3 - August

1 - Softer/Mobility



the Perfect Last

A Look That's Being Immitated - A Fit That Never Will.

The foundation of a good fitting boot isn't cables, retractable backs, Velcro, ratchets, buckles and other gadgets and gizmos. The technical "selling features" of our boots aren't even visible. You have to dig a little deeper to uncover the framework of the fit for the modern day rider. Hidden behind our heat formed liners is the key to the right amount of forward lean, toe ramp, and proper fit between the liner and shell. Every year we tweak our Perfect Last, adding a little more here, and taking some out there with a guarantee you'll feel the difference. Just try them on - that's all we ask.

Featuring the only true heat formed molded liners.

Winner of the WSIA innovation and manufacturer of the year.

Double Lasted

Building a last of a wakeboarder's foot and simulating the movement while riding is the most important step in creating boots that fit properly. A last is an aluminum cavity that replicates every component of a foot determining the shape and size of the liner and a finished boot. This foundation is developed through an extensive R&D process based on what we determine will produce the best in fit and performance. Double lasting creates an exact fit from your foot to the shell of the boot for the best in comfort and response. We use the most compact and low profile lasts to reduce bulk and eliminate any unnecessary material.

part1

Our first unique lasting process is molding the liner around a last designed to the shape of an actual foot and leg. This step ensures the inside of the liner will have a great fit right out of the box. These are formed inside an actual shell to create the perfect net fit between liner and boot.

part2

The second part of our lasting process is molding the inside of the shell. This creates a liner to shell coupling that eliminates any "dead space" or "hot spots". After the second lasting, the previously molded liners are inserted into the shell and the boots are ready to ride.

Heat Molded Custom Fit

INTUITION

Lightweight, preformed, heat moldable Intuition liners just fit better right out of the box and custom form unlike any other type of supposed "moldable" boots out there. Ronix exclusive Intuition wake liners have set the standard for performance driven, comfort footwear. 5 minutes on the cooker at your local shop customizes a pair of boots to the exact shape of your foot for a lifetime. Flat foot, high arch, narrow heel, or cankles – whatever the dimension of your foot, our liners were made to be cranked up to 120 degrees Celsius and custom cooled to a rider's hoof. Intuition foam can also be re-heated and molded more than once without damaging the structural integrity or quality. The ultimate in customizable liners are now even more comfortable and less prone to packing out, with the highest strength density foam we have ever slipped our feet into. Half sizes can be accommodated with our custom fit process. The properties of Intuition foam allow the liner to expand and contract to the shape of your foot, allowing any pressure points or dead spots to be eliminated. The characteristics of this foam will accommodate any type of fit that you choose. A rider with a larger foot in a smaller boot will pack the foam to be thinner, yet more responsive. Likewise, a smaller foot in a bigger boot will allow the foam to expand more and create a softer, more forgiving boot.

New 2011 Intuition+ Liners

Ronix's new 2011 Intuition + liners spent years in the development stages, and are even that much better than our 2010 WSIA innovation of the year, Intuition custom orthotic boots. This provides even greater pack out resistance and makes the most comfortable boots all the more cush. Available in One, Relik, Cell, and Frank.

Stage 2 Liner

Improved comfort and the amazing support you would expect from the leaders in footwear. Now comes with reduced water absorption, a higher tear strength, and even less likely to "pack out". So when you buy a pair of size 9's - they won't feel like size 11's next season. The best in non heat moldable memory with our new exclusive foam all come complete with our 3D molded tongue. Available in Kai, District, Faith Hope Love, and Halo models.

Stage 1 Liner

Handcrafted exclusively by Ronix - high performance adjustable boots now feature our ultra lightweight new foam. Tipping the scales at a fraction of last year's models this new foam means no unnecessary swing weight and that same super comfy Ronix fit. A new standard of performance and feel from our least expensive models of boots. Available in Divide, Vision, Luxe, and August.

All Treble, No Bass

The only separation between a rider's foot and a Ronix board is our high impact shock absorbing footbed. Over the last four seasons, our engineers have been designing, testing and tweaking our revolutionary baseless system. A concept that makes our boots 1/3 lower in height and lighter – who doesn't want the best in boot to board response and a lighter setup to throw in the boat? Our super rigid chassis mounts to our universal board 6" hole pattern reducing heel/toe lift and maximizing energy transfer. Often imitated, never duplicated.



Ronix Ecology

Yes, our new line of footwear is a lot lighter and lower to the board than most, but we are also eliminating the use of PVC solvents which are potentially hazardous to the surroundings and human health. Instead, we are using more expensive, higher quality materials that are easier on the environment. In addition, the shell of the open and closed toe Kai Boots are made from recycled water bottles. Water bottles are made from a polymer called PET, which has created the relative abundance of post-consumer waste in the form of plastic bottles. Over 60 million bottles are thrown away per day, which then can take over a 1,000 years to biodegrade. We figured we should make some wakeboard boots out of them instead. The Kai series features a new synthetic leather recycled from your favorite 16.9 oz natural spring container. All 14 of our 2011 models are eco friendly kicks for a greener tomorrow.



Tool Less Hardware

Throw your screwdriver away with our tool less mounting system available on all models. Standard with every new pair of boots. The last thing you need on your boat is another tool.



Feet Belts

The footbelt seats your foot in the correct position in the boot by drawing your foot into the heel pocket. These float free of the outer shell to conform to the exact dimensions of your ankles. Heel hold down to a whole new level - don't worry you won't get pulled over if your footbelt isn't buckled. Available in One, Relik, and Cell.



CARBON R³

TECHNOLOGY

Want a longer, stiffer ride with more snap in your session?
(Get your mind out of the gutter - we are talking about this lively new creation)

For the past couple of seasons, Parks Bonifay, Danny Harf, and Chad Sharpe have been experimenting with different constructions of carbon woven layups in their pro models.

For 2011 the Ibex, One and Viva collection all come with our innovative Rider, Response Reinforcement technology. An even livelier version on the ATR editions.



What Is It?

This expensive fiber has a high tensile strength, lower overall weight and low thermal expansion.

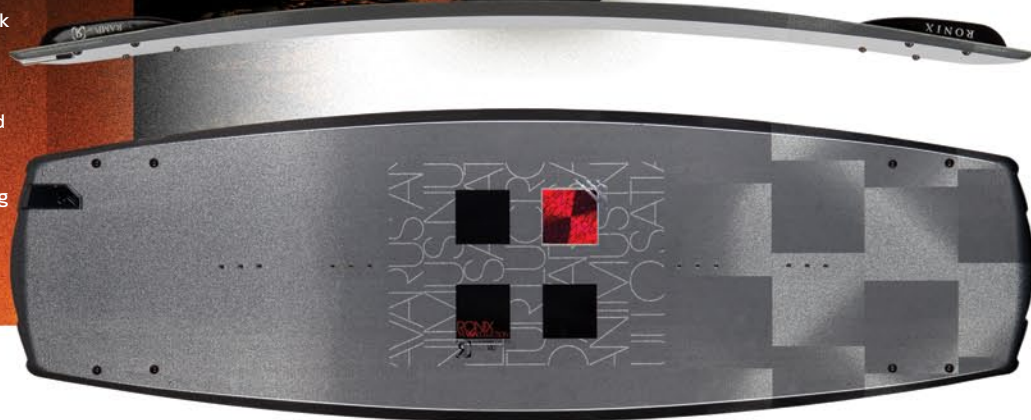
What Does That Do?

Thousands of carbon fibers are twisted together and then eventually woven into a fabric.

A. This makes a much stronger layup than a traditional fiberglass constructed board.

B. These properties are less likely to break down, but they are also much lighter with reduced swing weight in our new boards.

C. Ride the board the way it was intended to be ridden. Each board is handcrafted with a very specific rocker line. From the transition, to the trough/peak of the wake and landing, there is so much energy taking place stressing a board out of its intended shape. Strips of carbon located on the top and bottom help a board keep its original shape. This means a cleaner take off every time you leave the endless kicker.



We reserve the right to change details without notice - but you're clairvoyant, you'll figure it out.

Ronix warranties vary upon country.

Sizing is just a recommendation, we encourage you to try out our products first.

Support your local pro shop.

Square One Distribution Company
30200 SE 79th Street Building 110
Issaquah, WA 98027
Phone: 1 888-RONIXCO
Phone: (425) 369-6850

ronixwake.com
twitter.com/ronix
facebook.com/ronix.wake

Photography by:
Garrett Cortese
Spencer Smith
Tony Teske
Pat Panakos

kastdesignco.com - design & studio photography





fragmented technology
of a woven future

1

The ingredients for the best in wake & rail riding.

So you have heard of boards with fancy acronyms before and you get 2 sentences into the copy and and go huh?

We will get right to it....

Why would I not take another soul turn, boot off the wake, or session a fun box without an ATR edition board? There has never been a board that has taken into consideration weight, stiffness, and strength all into one like this before.

Weight

The lightest construction in our line up using virtually no fiberglass. Instead, we used lighter, stiffer carbon mixed with our secret concoction of Mod Pour Foam. Less swing weight means less effort in stomping that trick you thought couldn't happen.

Stiffness

A carbon fiber weave provides a more rigid layup than a traditional fiberglass constructed board. These properties are also less likely to break down, with superior weight, and help the board maintain the intended rocker line. There is so much energy taking place when a board hits the trough of the wake, peak, and landing. A 2.8" subtle 3 stage rocker can become much higher or lower during a transition, take off, and landing. This year we went with more carbon on our ATR edition. It costs a couple extra bucks, but the result is you can ride the board the way the rocker line was designed. We handcraft each model with a specific rocker line for a reason - to maintain it.

Durability

Complete with our Sintered Base, Krypto Cable, Slider ready fins, and refined Mod Pour Foam. Ready to bring on any obstacle in its way, by land or sea.

Approved by 3 owners of Ronix Wakeboards -
Danny Harf, Parks Bonifay, and Chad Sharpe

2

Sintered Base —☉

The most durable non stick base material we have ever tested on rails without loosing any glide speed on the water. Our exclusive base was formulated from a powder by heating the material in a sintering furnace below its melting point until the particles bond to one another. A higher purity of a compound that preserves its bond over time. No obstacle is safe at cable parks with our jib friendly base material.

Available on:
One, Ibex and Viva ATR boards
Also comes on:
Bill, Phoenix Project, Quarter 'Til Midnight, and Electric Collective



3

The Mod Pour ☉

A stiffer, lighter pour - this demanding alternative core is made from our exclusive blend of carbon and atoms. The highest strength to weight ratio we have ever tested - setting the standard of the most refined concoction of foam out there.

Available on:
Every Ronix Wakeboard



4

Slider Fins ☉

A fin actually designed to be sessioned on rails. Wider profile, flatter bottom surface, and a durable construction ready for anything in its way. Also designed for riders that like that "finless feel", the wider design creates turbulence giving it a looser contact with the water.

Available on:
One, Ibex and Viva ATR boards

Also comes on:
Bill and Phoenix Project



5

Krypto Cable ☉

Different fibers are brewed up and then woven together to make a stronger compound. The Krypto Cable (blue dot in cross section) surrounds the profile of the board and is fused together with our new Mod Pour.

Strength — Combined with our monocoque laminated glass (yellow lines in cross section) this cable makes the sidewalls of the board the strongest part of the board — not the weakest.

Flex — The strength of our Mod Pour foam and our Carbon R² Technology means a board will want to maintain its intended rocker line thru a transition, trough, and landing impact beyond a conventional layup. A torsionally stiffer ride allowing the board to create more angle and speed out of a turn by preventing the profile from flexing side to side.

Available on:
Every Ronix Wakeboard



1
RONIX
DESIGNED BY
DANNY HARF

The ONE ATR

The shape that pioneered the evolution of surf style designs for soul turn connoisseurs looking to come into a turn with a relaxed arcing transition. Shallow molded fins, forgiving angled bevels, and a full mid rail set the pace of this mellower inspired turn. As a rider's weight shifts back, the variable rail transitions to a sharper rail and bevel in the tail – so the board can hook up with a strong, predictable edge up the wake every time. Upgrade your travels with this fast signature 3-stage lift, balancing the spectrum of rockers. Danny is constantly spending time with our in-house shaper developing new rockers to find that balance of top water speed vs. a board that will make every transfer feel like a triple up. The first rider to sign with Ronix, the first freeride feel of its kind and the first to land a 1260 - the One Collection.

- × Round rails thru the center, with a angled bevel prevent that all too familiar edge catching digger, create an even mellower transitioned carve
- × Thin profile reduces swing weight
- × Clean center bottom design – this rockerline leaves the wake and lands with more forward momentum so there is no need for big channels to reduce the impact on landings
- × Side vents – for a stronger grip up the wake
- × Carbon Technology – ride the board the way it was intended to be ridden with the most carbon maintaining the original rocker line
- × Krypto Cable - makes the sidewalls the strongest part of the board – not the weakest, along with a torsionally stiffer board
- × Mod Pour - this demanding alternative core is made from our exclusive blend of carbon and atoms with a higher strength to weight ratio
- × Sintered Base – the most durable non stick compound we have ever tested on rails without loosing any glide speed on the water
- × Artwork – screened UV clear top/neon GP yellow, 3-D, and pearl inks/machined aluminum emblem/recessed multi-faceted badge underneath the topsheet
- × 4 fiberglass 1.0" fins and 4 fiberglass .8" slider fins
- × Danny Harf designed and endorsed



ONE SPECS

Size (cm)	Area (Square In)	Rocker Height (In)	Rocker Angle/Arc	Stance 6" Board & Plate	Center Width (In)	Weight Range (lbs.)
134	748	2.4	10/late	21.5-25.5	16.4	Up to 160 lbs.
138	780	2.5	10/late	22.5-26.5	16.6	Up to 175 lbs.
142	812	2.6	10/late	23.5-27.5	16.8	165 lbs. and up
146	834	2.7	10/late	24-28	16.8	175 lbs. and up

The ONE BOOT

This defending WSIA innovation of the year recipient is the boot that put Ronix on the map in 2007, redefining high end signature footwear. Often imitated - never duplicated, Danny Harf's medium density heat formed and custom fit Intuition lined boot continues to be upgraded every year. Just stiff enough to have board response for a session of quick reacting soul turns and the mobility for him to tweak out his historical 1260. The boot he is filmed jumping into pools with, and thru double ups in his upcoming documentary, is now crafted from our even more comfortable Intuition + Liner. If we could make only 1 boot - this would be it.

- × Ronix's patent pending baseless system - the original low profile design has superior board control and is ultra light for reduced overall swing weight - often imitated never duplicated
- × New Intuition + Liner - preformed heat moldable - the ultimate customizable liners are now even more comfortable and less prone to packing out
- × A medium density liner blending mobility and precision board control
- × Made from wakeboard specific lasts - not a guess
- × Double lasted with the most low profile and compact lasts eliminate excess material and deliver optimal energy transfer between boot and board
- × Removable J-bars customize your heel pocket
- × Feetbelt - secures your ankle and maximizes heel hold
- × R.A.D. foam - radder dampening than ever
- × Throw your screwdriver away with our tool less mounting system
- × A magnetic attached lace cover
- × Silicon ink in heel area for greater hold down
- × New low friction eyelets
- × Eco Innovation - no use of PVC solvents
- × Ridden by Danny Harf



FLEX 3



ONE SIZING

US	6 - 7	8	9	10	11	12	13 - 14
UK	5 - 6	7	8	9	10	11	12 - 13
Europe	38 - 39	41	42	43	45	46	47 - 48
Japan	24 - 25	26	27	28	29	30	31 - 32

For more info check out www.ronixwake.com/onecollection

The ONEBOARD

Danny's One Collection also comes in an alternative color way. The same freeride performance shape*, and all of the features of our other One boot preferred by more Ronix riders and other pros out there.

For the features of the proving grounds of these goods read page 20-21 or - ronixwake.com/onecollection

*This One board colorway doesn't come with our jib friendly Sintered Base or Slider Fins, and has a slightly toned down carbon layup.



WHO WE ARE...

In December of 2005, Ronix Wakeboards was founded with some of the biggest pioneers and riders, all as owners with a simple question – who does it the best? It's why we left, why we started, with a motivation knowing that all of our innovation and these handcrafted 24 new shapes will be dated next season. We have a R&D crew with over 100 years of watersports manufacturing experience responsible for making the first compression molded wakeboard/wakeskate/wakesurf board and the original wakeboard boot covering the globe. Some of the products we make up at our lab - Radar Lake. Other products are made in various regions of the USA, New Zealand, Netherlands, Germany, Austria, Switzerland, Asia, Canada and Italy. All together, we make products in 27 unique factories in 10 countries. A more expensive and timely way of doing business for sure, but when you lace into our new WSIA innovation of the year, baseless One boots while riding Danny Harf's bulletproof Sintered Base, Carbon R3 Technology One board and take a left handed double up at the end of the lake we think you will know why.

Thanks for making Ronix the fastest growing pro shop wakeboard company,

- Ronix

The ONEBOOT



THE
IBEXBOARD

In 2010, Mr. Bonifay finished his run of traveling the globe filming new sections for his X Dance winning documentary “The Parks Movie”. A title that covers the journey of a rider that has been on the water since he was 6 months old. Thru his 27 years of being on the water, he continues to understand what works for his riding and what he needs in his board. This past season, Parks created a revolutionary wider/explosive profile complimenting a toned down 3-stage rocker - dispelling the rumor that his products are too aggressive or inconsistent. He reduced his rocker line, for a smoother glide off the wake, and instead of a radical rocker line design creating the lift, this is generated by the board's added surface. The Ibox is 1" wider in the tip/tail than his previous designs, with a faster, cleaner take off, and more stability on and off the water with added glide requiring less effort to get speed. All the while, our engineers experimented with a more forgiving center variable rail, without loosing feel on the water. Still one of the strongest edging boards in our line up with increased effective edge into the wake from the longer channels, and wider cupped rails.

- * Center variable edge – a sharper rail and a softer bevel create a controlled accelerated edge transfer with a forgiving bottom design
- * Tip/Tail variable edge – a more vertical rail allows the end of the board to ride higher on the water and prevents the board from burying the edge on big cuts with a sharper bevel for quicker response into a turn
- * Thin profile reduces swing weight
- * A clean bottom design - the board lands with more natural forward momentum allowing us to use cleaner bottoms
- * Wide profile – with this much surface area we balance it out with more sidecut for the right amount of effective edge in the water
- * Carbon R3 Technology – ride the board the way it was intended to be ridden with the carbon maintaining the original rocker line
- * Krypto Cable – makes the sidewalls the strongest part of the board – not the weakest, along with a torsionally stiffer board
- * Mod Pour – this demanding alternative core is made from our exclusive blend of carbon and atoms with a higher strength to weight ratio
- * Artwork – screened UV clear top/neon magma, clear structured, pearl inks/matte emblem with rubberized Parks DNA inset
- * 4 detachable 1.0" ramp fiberglass fins
- * Parks Bonifay approval - with the largest sweet spot of any signature board he's ever ridden



Ibox ATR // pg 18-19



IBEX SPECS		Rocker Height (in)	Rocker Angle/Arc	Stance 6" Board & Plate	Center Width (in)	Weight Range (lbs.)
Size (cm)	Area (Square In)					
134	777	2.6	9.8/medium	21.5-25.5	17	Up to 175 lbs.
139	820	2.7	9.8/medium	23-27	17.3	160 lbs. and up
144	864	2.8	9.8/medium	24-28	17.6	180 lbs. and up

THE
RELIKBOOT

Built on our revolutionary baseless plate system, our lightest heat formed custom fit boot with a plasmatic portion of alloy tips the scale at a slight 1.6 lbs. The Relik boot is designed for riders that want the most mobility out of a closed toe boot. A lower cut boot, using our new Intuition + liners are now even more comfortable, along with a lightweight shell material for the most in side to side latitude. Parks Bonifay's custom orthotic freestyle inspired signature footwear has more lateral freedom than the One or Cell boot, without sacrificing heel hold down. No excuse for compromised style with the freedom of a pair of new Relik boots.

- * Ronix's patent pending baseless system - the original low profile design has superior board control and is ultra light for reduced overall swing weight - often imitated never duplicated
- * New Intuition + Liner - preformed heat moldable - the ultimate customizable liners are now even more comfortable and less prone to packing out
- * Our softest density liner is also perforated - offering the most mobility in a high-end boot
- * Made from wakeboard specific lasts - not a guess
- * Double lasted with the most low profile and compact lasts eliminate excess material and deliver optimal energy transfer between boot and board
- * Removable J-bars customize your heel pocket
- * Footbelt - secures your ankle and maximizes heel hold
- * R.A.D. foam - radder dampening than ever
- * Throw your screwdriver away with our tool less mounting system
- * Silicon ink in heel area for greater hold down
- * New low friction eyelets
- * Eco Innovation - no use of PVC solvents
- * Ridden by Parks Bonifay



FLEX 6

INTUITION

RELIK SIZING

US	6 - 7	8	9	10	11	12	13 - 14
UK	5 - 6	7	8	9	10	11	12 - 13
Europe	38 - 39	41	42	43	45	46	47 - 48
Japan	24 - 25	26	27	28	29	30	31 - 32

THE VIVA BOARD

Since winning the WWA World Championship in 1999, Chad Sharpe has been synonymous with coming out of the turn - tire squealing, hard charging up the wake, FAST rides. This board has sharper rails from end to end creating more effective edge with the water, rockerlines that mimic the natural transition of the wake carrying more speed up the kicker, and fin placements that allow the board to react as quickly as the rider can control it. New for 2011 is the Viva setting more contact points in the water than any board in our line. This ride is nearly 1/2" wider in the belly with a similar tip/tail width vs. his previous boards - the additional sidecut just adds to the speedy vortex of Shangri-La Chad was looking for. Effortless high speed carves and a comparable hybrid rockerline to his previous models - a board you never have to worry about keeping up with you.

- * Our sharpest center rail creates a super quick edge transfer and line into the wake is also more reliable in choppy water conditions
- * Shallower exit channels - help relieve the pressure with the water
- * Thin profile reduces swing weight
- * Carbon R3 Technology - ride the board the way it was intended to be ridden with the carbon maintaining the original rocker line
- * Krypto Cable - makes the sidewalls the strongest part of the board - not the weakest, along with a torsionally stiffer board
- * Mod Pour - this demanding alternative core is made from our exclusive blend of carbon and atoms with a higher strength to weight ratio
- * Artwork - screened UV clear top/metal flake ink/gun metal top emblem/etched badge underneath the topsheet
- * 4 fiberglass 1.0" fins
- * Chad Sharpe's speedy creation - take it out in the flats or wake-to-wake



Viva ATR // pg 18-19



VIVA SPECS

Size (cm)	Area (Square In)	Rocker Height (In)	Rocker Angle/Arc	Stance (In)	Center Width (In)	Weight Range (lbs.)
136	792	2.6	9.4/medium	22-26	17.1	Up to 160 lbs.
140	825	2.7	9.4/medium	23-27	17.3	170 lbs. and up
144	857	2.8	9.4/medium	24-28	17.5	175 lbs. and up

THE CELL BOOT

For the rider looking for the ultimate board/boot response. The stiffest heat formed boot in our line has a unique rigid back design that delivers the most responsive and direct control over your board. Chad Sharpe's sub 2 lb. baseless boot features more overall foot and lower leg support. Comfort that you can dictate with our new innovative Intuition + heat molded footwear. A construction made to adapt to any rider's foot and lower leg - gone are the days of worrying about if you are in between sizes. Look a little closer - there are actually 9 different black materials making up this patriotic based boot.

- * Ronix's patent pending baseless system - the original low profile design has superior board control and is ultra light for reduced overall swing weight - often imitated never duplicated
- * New Intuition + Liner - preformed heat moldable - the ultimate customizable liners are now even more comfortable and less prone to packing out
- * A stiff density liner offers the best in responsive board control
- * Made from wakeboard specific lasts - not a guess
- * Double lasted with the most low profile and compact lasts eliminates excess material and delivers optimal energy transfer between boot and board
- * Removable J-bars customize your heel pocket
- * Feetbelt - secures your ankle and maximizes heel hold
- * R.A.D. foam- radder dampening than ever
- * Throw your screwdriver away with our tool less mounting system
- * Silicon ink in heel area for greater hold down
- * New low friction eyelets
- * Eco Innovation - no use of PVC solvents
- * Ridden by Mr. - funwhenwet.com - Chad Sharpe



FLEX 9

INTUITION

CELL SIZING

US	6 - 7	8	9	10	11	12	13 - 14
UK	5 - 6	7	8	9	10	11	12 - 13
Europe	38 - 39	41	42	43	45	46	47 - 48
Japan	24 - 25	26	27	28	29	30	31 - 32

BILL

A board for the movement of longer rope lengths, bigger wakes and faster boat speeds comes equipped with our revolutionary Sintered Base material. Leave it to Bill to design a series that has a different skate like feel on the water for water jockey sledders that can only be described as a versatile ride behind the boat, or at a cable park. He created a shape for the modern day wakeboarder with an improved drag coefficient and a super fast hybrid rocker with a higher degree of angle in the tip/tail. Bill loves to indulge in all sorts of big words like drag coefficient. He's a smart guy and knows what the next generation of riders are looking for in a really fast ride. New wider stance options for more board control on sliders - no better way to compliment a night of clubbin'.

- × Center variable edge – a 10" semi full rail and a subtle bevel create a controlled accelerated edge transfer with a forgiving bottom design
- × Tip/Tail variable edge – a sharper rail and bevel have more of a locked down feel once on edge
- × Thinner profile reduces swing weight along with a unique 45° angled tip/tail profile
- × Simple bottom shape with a slight convex belly designed to land with more forward momentum
- × Krypto Cable - makes the sidewalls the strongest part of the board – not the weakest, along with a torsionally stiffer board
- × Mod Pour - this demanding alternative core is made from our exclusive new blend of carbon and atoms
- × Sintered Base – the most durable non stick compound we have ever tested on rails without loosing any glide speed on the water - grind away
- × Artwork - screened UV clear top / heat sensitive, scent of a night out, glow-in-the-dark, and neon sukun inks / furry moustache
- × 4 fiberglass 1.0" fins & 4 fiberglass .8" slider fins
- × Bill approved and endorsed by the WWA National Champion Adam Errington

FRANK

Discoteca dance floor specials - a similar overall feel as the award winning One boot, on Frank's budget. The same heat formed custom orthotic fit found in the rest of our high-end line. Thank Frank for pro model performance without the same price tag. Notice the heat sensitive ink image yet?

- × Ronix's patent pending baseless system - the original low profile design has superior board control and is ultra light for reduced overall swing weight - often imitated never duplicated
- × New Intuition + Liner - preformed heat moldable - the ultimate customizable liners are now even more comfortable and less prone to packing out
- × A medium soft density liner offers both flexibility and support
- × Made from wakeboard specific lasts - not a guess
- × Double lasted with the most low profile and compact lasts eliminate excess material and deliver optimal energy transfer between boot and board
- × Built in J-bars improve heel hold
- × Throw your screwdriver away with our tool less mounting system
- × New low friction eyelets
- × Eco Innovation - no use of PVC solvents
- × Ridden by the latest member of Ronix, Frank & Adam Errington



BILL SPECS

Size (cm)	Area (Square In)	Rocker Height	Rocker Angle/Arc	Stance 6" Board & Plate	Center Width (in)	Weight Range (lbs.)
134	764	2.6	10.3/medium	22-26	16.5	Up to 170 lbs.
138	797	2.7	10.3/medium	23-27	16.7	Up to 180 lbs.
142	830	2.8	10.3/medium	24-28	16.9	170 lbs. and up

FLEX



FRANK SIZING

	6 - 7	8 - 9	10	11 - 12	13 - 14
US	6 - 7	8 - 9	10	11 - 12	13 - 14
UK	5 - 6	7 - 8	9	10 - 11	12 - 13
Europe	38 - 39	41 - 42	43	45 - 46	47 - 48
Japan	24 - 25	26 - 27	28	29 - 30	31 - 32

PHOENIX PROJECT

For decades, our engineers have been developing different layups of glass, constructions of different woods and foam to create a board that does one thing, store energy. We created a new board with a controlled flex that allows a rider to push all the way up the transfer and as the tail passes thru the wake it continues to build energy - not dampen the ride like some "flex" boards out there. A rider can feel the board transfer energy from the nose to the tail the longer you wait. A deck that you ride more like your favorite snowboard, timing the wake with a later pop, or just ride it like a traditional board with a mellower jump and super forgiving landings. With the Phoenix Project's thinner profile and blended glass you can feel a balance point - whether you are pressing a board on rails and the board flexes until it locks, or just edging up the wake noticing the energy shift thru the board. A revolutionary new shape for riders that want more of a snow/skate feel leaving the wake, added control on rails with unique flex and wide 28" stance option or for riders that have a conventional style that just want a smooth overall ride.

- × Full center rail creates a smooth transferring board from edge to edge
- × Blends to a more vertical sidewall in the tip and tail allowing the board to ride higher on the water with more glide speed
- × Most exaggerated bottom bevel starts out at 4" blending to 18" on the ends - super forgiving and less likely to get hung up on rails
- × Deep symmetrical channels - help with acceleration thru a turn and push the rider into the wake
- × Subtle tunnel more efficient water flow and stabilizes landings
- × Rocker line carries a lot of speed up the wake making it easier for a rider to have a late take off
- × Krypto Cable - makes the sidewalls the strongest part of the board – not the weakest, along with a torsionally stiffer board
- × Mod Pour - this demanding alternative core is new for this year made from our exclusive new blend of carbon and atoms
- × Sintered Base – the most durable non stick compound we have ever tested on rails without loosing any glide speed on the water - grind away
- × Artwork - screened UV clear, gun metal V emblem with lots and lots of flake
- × 4 fiberglass 1.0" fins & 4 fiberglass .8" slider fins
- × Versatile cable and boat board with a controlled flex designed by Pat Panakos and Erik Ruck



PHOENIX PROJECT SPECS						
Size (cm)	Area (Square In)	Rocker Height (in)	Rocker Angle/Arc	Stance 6" Board & Plate (in)	Center Width (in)	Weight Range (lbs.)
137	796	2.5	8.1/medium	21-27	16.9	Up to 180 lbs.
142	835	2.6	8.1/medium	22-28	17.1	170 lbs. and up



kai·mana
collection
power of the water
Designed By Dean Smith

RIDING STYLE // Dean Smith's amped up Mana board makes every wake feel like a kicker, whether you are loaded up or running flat into the wake. The most overall aggressive board in our line has a flattened rocker under your feet and a super late arc in the tip/tail. A board that lives up to the Polynesian name Kaimana – power of the water.

mana board

An award winning boot off the liquid kicker from our Mana series. For a rider looking for the ultimate straight up in the air snap. Over the past several seasons Australia's Dean Smith has been taking his freeride skills to another level. Regarded as one of the riders that goes bigger than most pros out there. This past season he created a new ride that has a super flat rocker under your feet and a really late/abrupt arc that doesn't punch through the wake. The Mana was designed to be ridden on edge with a sharper rail throughout the board, but doesn't need much angle into the wake to get a solid pop. Our most responsive, explosive overall series.

- × Sharp rail from tip to tail for more effective edge in the water
- × Softer bevel in the center of the board prevents catching an edge
- × Total of 8 molded in fins .7" outer, and .4" inner provide just enough grip to ride finless, but still has an easy release for spins
- × Slight "V" bottom means a faster edge to edge transition and softer landings
- × Krypto Cable - makes the sidewalls the strongest part of the board – not the weakest, along with a torsionally stiffer board
- × Mod Pour - this demanding alternative core is new for this year made from our exclusive blend of carbon and atoms
- × Artwork – screened UV clear top/pearl ink/wood inlay/2 antique foils/Maori bone inspired carving
- × 2 fiberglass 1.0" fins
- × Kaimana – power of the water with a good luck Maori bone for the water's travels
- × Dean Smith design



MANA SPECS						
Size (cm)	Area (Square In)	Rocker Height	Rocker Angle/Arc	Stance 6" Board & Plate (in)	Center Width (in)	Weight Range (lbs.)
135	772	2.5	11/late	21.5-25.5	16.4	Up to 170 lbs.
139	804	2.6	11/late	22.5-26.5	16.6	Up to 185 lbs.
143	838	2.7	11/late	24-28	16.8	170 lbs. and up

kai boot

Created for any riding style looking for comfort, ease of entry, and our new more comfortable Stage 2 liner. An affordable value with the same refined styling as our other high-end custom orthotic boots, available in both a closed and open toe model. The stiffest open toe performer in our line up, and a closed toe that has the best in non heat moldable memory out there. Inspired by our friends on the island, the shell of this boot was made from recycled PET - plastic water bottle material. Also available in a softer, conforming closed toe model.

- × Ronix's patent pending baseless system - the original low profile design has superior board control and is ultra light for reduced overall swing weight - often imitated never duplicated
- × New lightweight Stage 2 Liner - even more comfortable and less prone to packing out
- × Single lasted with the most low profile and compact last
- × Double laces - a more customized fit
- × 3-D Molded tongue blends comfort and performance
- × Articulating cuff - the boot flexes with the rider without any pressure points
- × Built in J-bars improve heel hold
- × Throw your screwdriver away with our tool less mounting system
- × Eco Innovation - no use of PVC solvents and partially crafted from recycled water bottles
- × Inspired by our friends on the islands and ridden by Australia's own - Dean Smith

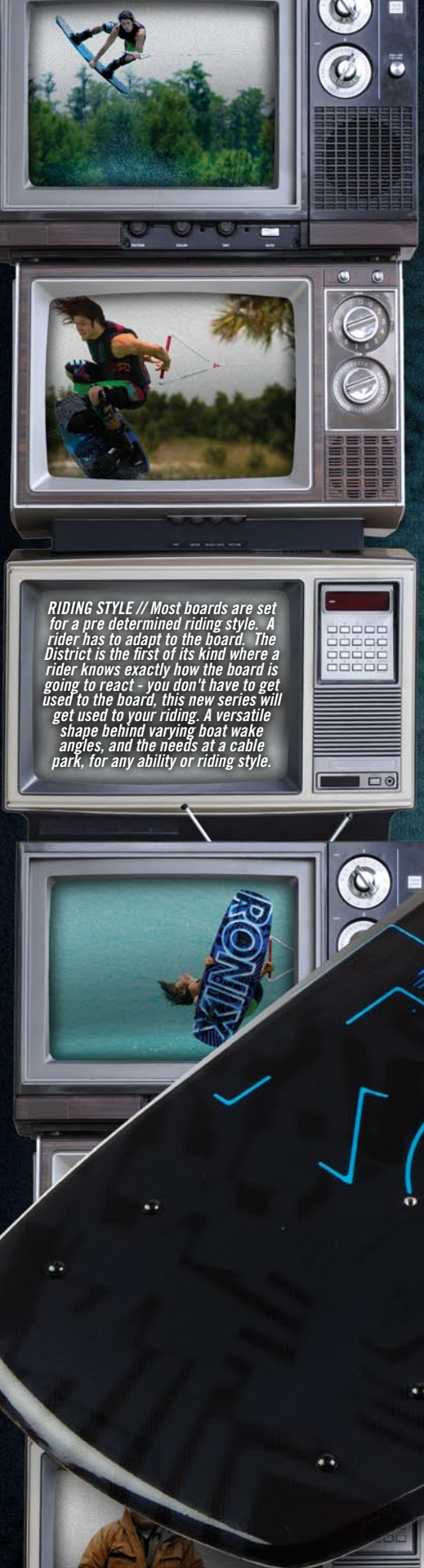


FLEX 7

KAI CT SIZING						
US	6 - 7	8 - 9	10	11 - 12	13 - 14	
UK	5 - 6	7 - 8	9	10 - 11	12 - 13	
Europe	38 - 39	41 - 42	43	45 - 46	47 - 48	
Japan	24 - 25	26 - 27	28	29 - 30	31 - 32	

FLEX 8

KAI OT SIZING						
US	5 - 8.5	7.5 - 9.5	9 - 11.5	10.5 - 14.5		
UK	4 - 7.5	6.5 - 8.5	8 - 10.5	9.5 - 13.5		
Europe	37 - 41.5	40 - 42.5	42 - 45.5	44 - 48		
Japan	23 - 26.5	25.5 - 27.5	27 - 29.5	28.5 - 32.5		



DISTRICT BOARD

Mike Ferraro has often been referred to as the best wakeboarding coach in the world. Responsible for teaching several of the current and past pro tour champions, along with riders that are just catching the stoke. He has taken all his knowledge of varying abilities, and styles to determine the universal characteristics a rider needs and blended them into one shape. The result was this new District shape, which is being referred to as the best board he has created to date. This board has a 3-stage lift in the center of the board, with a continuous outer rail. A rider can still get that explosive more vertical lift, and the faster outer rails push the board into the rider. You feel the speed of continuous and the float of 3-stage. If a rider comes in with a lot of angle, the board is reacting more to the outer continuous profile - feeling the added speed, coming in and flattening the board out as they hit the wake - the 3-stage kicks in. This is a series you don't have to really stand on to create a progressive cut from the sharp/hard edge on the tip/tail of the board, outside of the stance. The rounder radius bevel in the center of the board, inside of the stance, creates forgiveness. A legendary new all purpose shape from smooth/low maintenance turns, to wide open high speed cuts behind the boat, to versatility on the cable for air tricks and our super wide 27.5" stance option for added board control on sliders.

- * Sharper center rail creates a quicker edge transfer that is more reliable in choppy water conditions, blends to a more vertical sidewall in the tip/tail allowing the board to ride higher on the water with more glide speed
- * 2 Traction channels in the middle - help with acceleration thru a turn and push the rider into the wake, 4 Traction channels in the tip/tail - create a more stable feel on landings
- * 4 Flutes in the tip/tail - designed for a cable rider to aid the traction of the fins with a cleaner lift with less pressure on air tricks allowing the board to flick out of the water and away easier
- * Variable Bevel - rounder radius bevel on the inside of a riders stance blending to a sharp bevel on the outside for a clean progressive edge transfer and hold
- * Versatile rocker line - depending on how a rider edges into the wake it will feel like a continuous with easy transitions and soft landings, or a 3 stage rocker board and a more upright pop
- * Cable speed design - most surface area, and a sharper rail optimized for slower cable speeds
- * Artwork - UV Clear/ pearl ink/ retro TV emblem
- * 4 detachable 1.0" fiberglass fins
- * Created for the everyday rider

RIDING STYLE // Most boards are set for a pre determined riding style. A rider has to adapt to the board. The District is the first of its kind where a rider knows exactly how the board is going to react - you don't have to get used to the board, this new series will get used to your riding. A versatile shape behind varying boat wake angles, and the needs at a cable park, for any ability or riding style.



DISTRICT SPECS

Size (cm)	Area (Square in)	Rocker Height	Rocker Angle/Arc	Stance 6" Board & Plate	Center Width (in)	Weight Range (lbs.)
134	799	2.5	8.5/medium	19.5-25.5	17.2	Up to 185 lbs.
138	832	2.6	8.5/medium	20-26	17.4	165 lbs. and up
143	872	2.7	8.5/medium	21.5-27.5	17.6	180 lbs. and up

DISTRICT

An open toe creation combining the 3-D molded tongue support and comfort of the Kai boot liner, with a shell construction similar to our new Divide boot. Made from our new high memory Stage 2 liner with an even stronger molecular makeup keeping the boot's intended shape. The revolutionary Ronix fit at a more affordable value now has our new low friction easier to lace up eyelets.

- * Ronix's patent pending baseless system - the original low profile design has superior board control and is ultra light for reduced overall swing weight - often imitated never duplicated
- * New lightweight Stage 2 Liner - even more comfortable and less prone to packing out
- * Our softest open toe 3D-Molded tongue
- * Built in J-bars improve heel hold
- * Articulating cuff - the boot flexes with the rider
- * Throw your screwdriver away with our tool less mounting system
- * New low friction eyelets
- * Eco Innovation - no use of PVC solvents
- * Designed with the everyday rider in mind



FLEX 6

DISTRICT SIZING

	5 - 8.5	7.5 - 11.5	10.5 - 14.5
US	5 - 8.5	7.5 - 11.5	10.5 - 14.5
UK	4 - 7.5	6.5 - 10.5	9.5 - 13.5
Europe	37 - 41.5	40 - 45.5	44 - 48
Japan	23 - 26.5	25.5 - 29.5	28.5 - 32.5



RIDING STYLE //
The latest generation of boards understanding your body is working against the boat on a toeside edge.

VAULTBOARD

Gone are the days of leaving the wake's transfer in a unnatural position. The new Vault recognizes that your body is crossed up riding toeside, and takes this into consideration with the design of the rocker, fin shape/placement, and profile that allows the rider to point the board with maximum grip to the wake without requiring excessive attack angle. The design of the heelside was created for a rider facing the boat with a more natural position to point the board to the wake. Who said asymmetrical was only for entry level riders? Many contests have been won on the previous generation of the Vault - a series with no limits takes features from several boards in our line. This new ride is a platform to develop your riding style - allowing a rider to stand more efficient - redefining the demands needed for toe/heelside versatility.

- × Toeside rail is thinned out to sit deeper in the water creating additional grip from this sharp profile
- × Toeside fins are deeper, longer and closer to the rail for a strong/stable edge hold
- × Heelside rail starts off softer/fuller for a mellower transition, then blends to a more vertical sidewall with less resistance on the water
- × Heelside fins are shorter and further from the rail for a quicker release on spinning tricks
- × 4 molded asymmetric fin shape track true in a straight line, but break free easier with more float in a side slide position
- × New wider profile creates a bigger sweet spot riding in any water condition
- × Artwork - sublimated top/red chrome foil
- × 2 fiberglass 1.7" fins
- × Designed by Mike Ferraro and our development team

①

②

VAULT SPECS						
Size (cm)	Area (Square In)	Rocker Height (in)	Rocker Angle/Arc	Stance 6" Board & Plate	Center Width (in)	Weight Range (lbs.)
128	745	2.4	8/medium	18-24	16.5	Up to 160 lbs.
134	791	2.5	8/medium	19.5-25.5	16.7	Up to 175 lbs.
139	830	2.6	8/medium	21-27	16.9	170 lbs. and up
143	869	2.7	8/medium	22-28	17	175 lbs. and up

DIVIDEBOOT

Our most popular open toe boot had a complete makeover with one thing in mind - weight reduction. We trimmed our already sub 2 lb. baseless boot another 20% with our new ultralight Stage 1 liner handcrafted exclusively by Ronix. This high performance adjustable boot comes complete with an articulating shell reducing pressure points - allowing freedom of movement without any hot spots found in a traditional one piece constructed boot. Support you would expect from a pro model boot, and ease of entry that will let you save your energy for after you have jumped off the swim deck. The latest in ease of entry and open toe adjustability.

- × Ronix's patent pending baseless system - the original low profile design has superior board control and is ultralight for reduced overall swing weight - often imitated never duplicated
- × New ultra lightweight Stage 1 Liner - no unnecessary swing weight, same Ronix comfort fit
- × Universal tongue - our most adjustable boot fitting multiple sizes
- × Built in J-bars improve heel hold
- × Articulating cuff - the boot flexes with the rider
- × Throw your screwdriver away with our new tool less mounting system
- × New low friction eyelets
- × Eco Innovation - no use of PVC solvents
- × Designed with the everyday rider in mind



FLEX

③

DIVIDE SIZING			
US	5 - 8.5	7.5 - 11.5	10.5 - 14.5
UK	4 - 7.5	6.5 - 10.5	9.5 - 13.5
Europe	37 - 41.5	40 - 45.5	44 - 48
Japan	23 - 26.5	25.5 - 29.5	28.5 - 32.5

AUGUST 12TH WAKEBOARDING DAY

Rise and shine chicks and bros. Alright, so hopefully you know a little bit about us, we have a ridiculous (that is a good thing) team, baseless heat formed boots, and some lightweight snappy boards. Not important right now, we are getting off track with why we reserved this soulful piece of propaganda with a weird staircase going into cyberspace next to it. In today's age it seems the day is getting a little shorter - campfire stories of the perfect session can too easily be replaced by updating my tweet book account. Not the case on August 12th - it shouldn't be on most days, but trust us on 8/12 you need to be sideways. A day to get back to the purity of why we all jumped off the swim deck for the first time, or the adrenaline rush of trying to do the infamous trick that rattled your dome last season.

So here is what you gotta do, and you might not like it when the alarm is cranking at quarter to 5, but you need to get up at the crack of dawn and carve some fresh tracks. Make sure your cell phone is no where in sight. Laptop, video games and most other "modern conveniences" that you can think of are sidelined for what should be front and center - a couple of 5 gallon buckets, boat keys, the perfect setup. Grab a couple of your favorite chums and make a day out of it. Hit that perfect left hander at the end of the lake, finish tapping screws on that 13 degree pitched A-Frame. Remember no cell phones - text messaging can be evil, instead spend that time coming up with a nickname for your buddy that bailed out last minute. Send us your most legendary moment. Snap a pic, or a video clip, and email us at ryan@squareoneco.com. Write a story about what you did that day that you have never done in wakeboarding. Who knows we might even publish your story on our site, but most importantly get out and ride. This summer our entire crew we will be up at our lab - Radar Lake hitting double ups, riding our new Sesitec powered System 2.0, partying, and filming for Danny's new movie - "Defy".

What will you be doing?

You only live once...

WELCOME TO THE WONDERFUL WORLD OF ILLUMINATI 8:12



A LABYRINTH TO FIND PRODUCT

SO MYSTICAL YOU WON'T SEE

THEM IN THIS PROPAGANDA.

FOR MORE INFO ON THESE

ELUSIVE GOODS CHECK OUT

WWW.RONIXWAKE.COM/ILLUMINATI

THE ZARIEL WAKESKATE

From the creators of the original compression molded wakeskate - the heavy weight guardian of the water comes in at over 14 lbs. Reed Hansen needed a stockier skate for board control he was looking for on the water and leaving it. Ronix spent two seasons designing a compression molded bi-level wood skate with the buoyancy of your favorite wood deck, and the durability of that wakeboard you have had in the garage since 97'. This bi-level shape creates a consistent, quicker swing weight than a traditional single level skate, yet still has the stability for somebody just taking the drop. Reed rode his way to winning the coveted titles of Wakeboarding and Alliance Magazine's rider of the year on his stock off the shelf Zariel skate.

- × Concave - starts in the center of the board and then tapers to the ends for a more controllable flip
- × Hybrid Rocker - isn't too explosive, or inconsistent off the wake, instead you'll get more glide speed from this arc
- × Compression molding - the most durable wood skate out there
- × 2 Zariel .8" wakeskate specific fins
- × Reed Hansen designed and endorsed



ZARIEL SPECS

Size	Area (Square in)	Rocker Height (in)	Rocker Angle/Arc	Center Width (in)	Weight Range (lbs.)
40"	532	1.8	8.3/Medium	15	Up to 165 lbs.
42"	559	1.9	8.3/Medium	15	Up to 180 lbs.
44"	594	2	8.3/Medium	15.2	155 lbs. and up



OBESE TECHNOLOGY

14 + lbs. - more board control with a heavier skate

THE ELECTRIC COLLECTIVE WAKESKATE

A new high-end single level concave/kicktail deck ready to take on any obstacles with our Sintered Slider Base. Faster than any material we have ever tested on the water, doesn't gut hung up on rails, and most importantly won't grind away like some other base materials out there. Lighter than the Zariel skate, with a similar shape and rocker. Back lip the A-frame at your local park, or link some new tricks at your watering hole with this sexy little durable aquatic critter. The new Electric Collective skate has a wakeboard construction with a wood skate feel.

- ✕ Concave - starts in the center of the board and then tapers at the ends for a more controllable flip
- ✕ Hybrid Rocker - isn't too explosive, or inconsistent off the wake, instead you'll get more glide speed from this arc
- ✕ Sintered Base - the most durable non stick compound we have ever tested on rails without loosing any glide speed on the water
- ✕ Compression molding - the most durable wood skate out there
- ✕ 2 wakeskate specific fins



ELECTRIC COLLECTIVE SPECS

Size	Area (Square In)	Rocker Height (In)	Rocker Angle/Arc	Center Width (In)	Weight Range (lbs.)
41"	567	1.8	8.2/medium	15.4	Up to 180 lbs.
43"	594	2	8.2/medium	15.4	155 lbs. and up



THE ROVE KARVER

The hard edging, stable new Rove Karver skate has more surface area and deeper fins than any deck sans boots we have ever created. Created for riders looking for the stability of their favorite longboard, and one you can shred an effortless cutback. It's not always about the wake - sometimes it's the path to get you there. Upshift a gear with the most affordable fast/reliable ride in our line.

- × Grippy EVA top deck with built in wedge for extra power and stability
- × Hybrid Rocker – isn't too explosive, or inconsistent off the wake, instead you'll get more glide speed from this arc
- × The first of its kind - no skate rides like it
- × 2 big ol' fins on the tail

ROVE KARVER SPECS

Size	Area (Square in)	Rocker Height (in)	Rocker Angle/Arc	Center Width (in)	Weight Range (lbs.)
40"	594	1.8	8.2/medium	16.2	Up to 180 lbs.
42"	623	1.9	8.2/medium	16.2	155 lbs. and up
44"	653	2	8.2/medium	16.2	165 lbs. and up



The ONE SKIMMER

D. Harf took his years of traveling the world's beaches and created a new thin profile freestyle influenced, skimboard style shred stick to compliment the Koal. Coming in at nearly 1/2 the thickness of the Koal, this lighter/dished out new surf constructed deck has more of a lively feel on the water, and makes it easier to bring your favorite skate tricks behind the swim deck. A new ride that's easy to surf switch with our new recessed fin box on the tip and tail. Perfect your ollie with this new water device available in 2 sizes 4'4" and 4'10".

- × Machined EVA top deck with built in wedge
- × Semi twin shape - easy to ride switch
- × 1 - .9" bottom mount tip fin
- × 1 - 2.9" bottom mount tail fin
- × Surf constructed - lighter, faster, more buoyant, and yes more fragile (handle with care)
- × Created by Danny Harf

ONE SKIMMER SPECS					
Size	Area (Square In)	Rocker Height (In)	Rocker Angle/Arc	Center Width (In)	Weight Range (lbs.)
4' 4"	783	1.7 nose - 0.2 tail	8.4/late	19.9	Any Size
4' 10"	920	2.0 nose - 0.2 tail	8.4/late	21	Any Size



the Duke Longboard

Let's hit the e-brake on the 21st century hustle. Sometimes you need to quit updating your social media site, replying to the "what did you do last night?" text, and on August 12th our self proclaimed go ride day even school and work should be taking a rain check. Sometimes you need those days and a product to remind us all of why there is no feeling like riding sideways on the water. This no hurry, a relaxed toes on the nose longboard feel, should be coming with some 25 SPF sunscreen, a coupon for a free Mai Tai, and a hang loose Waikiki fluoro tank top (but it doesn't). The thickest, most buoyant surf constructed board in our range has our thickest/full rail with a forgiving soft bevel. Grab a couple of your favorite chums regardless of the surfer's size, or boat wake and experience the endless wave of this new design.

- × Machined EVA top deck with built in wedge
- × 1 Longboard specific 4.5" bottom mount fin
- × A new innovative 6' 1" one size fits all shape
- × Surf constructed - lighter, faster, more buoyant, and yes more fragile (handle with care)
- × Erik Ruck approved

DUKE SPECS					
Size	Area (Square in)	Rocker Height (in)	Rocker Angle/Arc	Center Width (in)	Weight Range (lbs.)
6' 1"	1245	4.5 nose - 0.2 tail	10.6/late	21.5	Any Size

the Koal Surfboard

A high end line of fast gliding surf constructed decks for us freshies - from the creators of the original compression molded wake surfboard. The past 9 years of designing wake surfboards have resulted in a refined version of last season's hard carving Koal series. This speedy shape rides even higher on the water with a new fuller profile and a thicker more buoyant surf constructed core. Inspired by our favorite fish profiled board, named after our favorite black sand beach, and has only one function – throw the deck on rail. The Koal's shape and construction is a perfect ride for inlanders looking for the best in wake slashing performance. Available in 3 sizes covering the spectrum of riders and wake sizes. Throw your wakeboard screws away - our new Koal series now comes with cleaner profiled fins that have a fin box recessed right into the board.

- ✖ Machined EVA top deck with built in wedge
- ✖ The quickest rocker line, construction, profile and rail design we have ever made
- ✖ 3 new surf specific 2.9" bottom mount fins
- ✖ Surf constructed - lighter, faster, more buoyant, and yes more fragile (handle with care)
- ✖ The soul of surfing is ridden by Parks Bonifay

KOAL SPECS

Size	Area (Square In)	Rocker Height (In)	Rocker Angle/Arc	Center Width (In)	Weight Range (lbs.)
4' 6"	810	3.0 nose - 0.2 tail	26.5/late	20.6	Any Size
5'	1000	3.3 nose - 0.2 tail	26.5/late	21.6	Any Size
5' 6"	1100	3.6 nose- 0.2 tail	26.5/late	21.6	Any Size





Paint Drip Koals

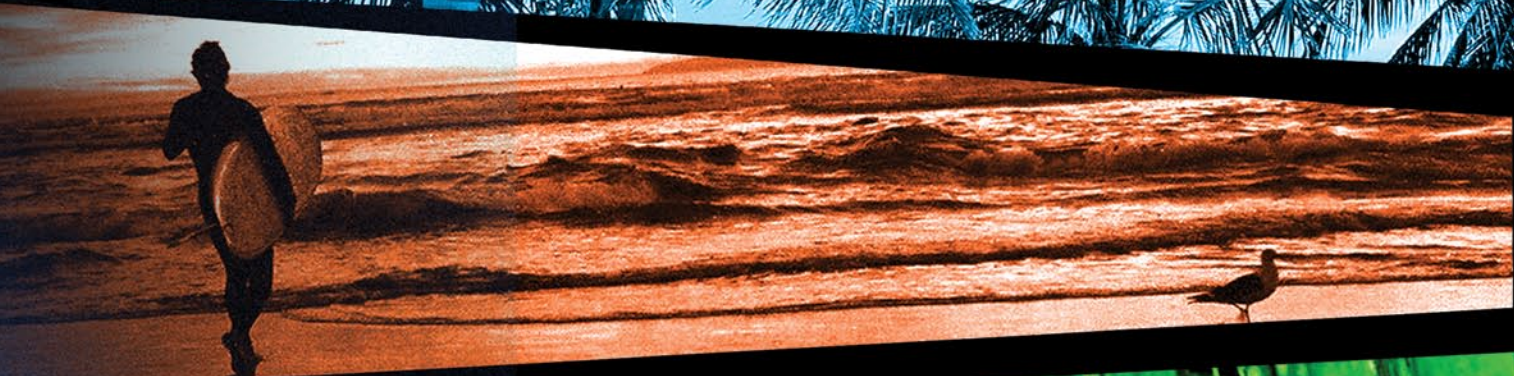
Same construction, sizes and performance as our Black Koal Collection - these are just a little harder to find. Each one is slapped with a different fresh coat of paint. Sold only at exclusive Ronix dealers.

For more info on our range of decks check out www.thesoulofsurfing.net

KOAL SPECS

	Size	Area (Square In)	Rocker Height (in)	Rocker Angle/Arc	Center Width (in)	Weight Range (lbs.)
yellow	4' 6"	810	3.0 nose - 0.2 tail	26.5/late	20.6	Any Size
blue	5'	1000	3.3 nose - 0.2 tail	26.5/late	21.6	Any Size
red	5' 6"	1100	3.6 nose- 0.2 tail	26.5/late	21.6	Any Size

Cortez



Wakeboard durability with lightweight foam and glass buoyancy from the originators of the first compression molded wake surfboard. A versatile subtle swallowtail design for toes on the nose stability, frontside airs off the lip performance, and big cutbacks on the wake. The 4'8" is perfect for riders looking at a performance deck on mid-to-large size freshwater barrels. The bigger 5'4" is for riders of any size looking for a freshwater surf experience - even with smaller boat wakes. The fish shape tri-fin series delivers on the rail maneuverability with a speedy rocker line to keep a surfer tight in the line of a wake.

- * EVA top deck with built in wedge for more power into a turn
- * Variable rail design - sharper bevel/rail in the tail for a quicker edge transfer and a mellower more stable bevel/rail blending to the front of the board for a floatier, more forgiving feel
- * Krypto Cable - makes the sidewall the strongest part of the board - not the weakest, along with a torsionally stiffer board
- * Mod Pour Foam - this demanding alternative core is new for this year made from our exclusive blend of carbon and atoms
- * 3 surf specific designed fins
- * Oh yeah, designed by Herb



CORTEZ SPECS

Size	Area (Square In)	Rocker Height (In)	Rocker Angle/Arc	Center Width (In)	Weight Range (lbs.)
4' 8"	1000	3.3 nose - 0.2 tail	28/late	21.6	Any Size
5' 4"	1100	3.5 nose - 0.2 tail	28/late	21.6	Any Size

Engineered

TO FIT ALL

Primates



Why?

Why is a monkey the ambassador of this technical new life jacket that spent years in the laboratory to create a flex for the needs of a rider, without restricting movement? Seems weird when we have some of the most iconic wakeboarders. Shoot 'em with just a splash of dimly lit background shadowing their body, creating a silhouette, compounded with a moody look about their disposition. Could have been like that cool guy vibe going around these days. You know the feel we are talking about? Like those liquid refreshment commercials where that suave guy says he doesn't always drink beer, but when he does he prefers theirs, usually playing the roll of the world traveler with hot chicks in the back ground. That guy is pretty cool though...maybe not as cool as Bill and Frank clubbin' on a night at the discoteca - but still pretty cool. Alright, well before we answer that let's ask another question that's been eating at us. Why is every life jacket flat? You lay a vest down on the ground and it compresses flat, right? The function of this new vest construction is that you have a seam running diagonally across your body, allowing movement that was only previously reached by ancient primates.

Blatant Claim Of Innovation

There's really no reason to beat up the fact that we have established an assured fit that will change the way you think about legalized flotation - trust us you just need to try it on. How did we harvest greatness with this distinctly different fitting buoyant, aqueous portion of life insurance?

The Reason

Let's now properly introduce you to the Pleasure Monkey. The other guys may use guinea pigs for testing but we have our own in-house chimp handling all rigorous water suspension analyzation. Let's face it, no one has the moves of a monkey, and no monkey cares more than the Pleasure Monkey. As for him, there's no money or fame in it, yet he remains unstoppable in our creative skeletal protection. This latest craft has a foundation sewn from 5 panels for more rib protection and a truly round fit. Seriously, this baby won't even lay flat, which is why its called the Capella* vest. Oversized armholes let The Pleasure Monkey swing freely and the deep-V neckline lets his chest hair breathe. The diagonal stitch lines crossing the monkey's chest react to his movement, providing flexibility he couldn't find in other cuts.

So don't ride in this vest for us. Do it for the Pleasure Monkey. He even spit shined this baby with a sexy graphic tying up with the One Series. Besides that, wearing CGA protection is smart.



Capella CGA Life Vest

- × 2 buckles, 1 zip closure
- × Coast Guard Approved
- × Smooth Skin/Neoprene Shell
- × Available in: Small-XXL

*Capella** is one of the dudes who was convinced the Earth was round back in the day. Pretty smart guy, it took the help of a monkey for us to figure out that vests should be too.

**not Capella →



Rib Huggers



Covert CGA Life Vest

Covert - Our original Coast Guard approved jacket at our most affordable value. Built in flex segments and oversized armholes offer extra mobility and water resistant neo skin panels. This vest fits snug to a rider's chest with an anatomical cut, 2 buckles and one zipper closure. Might not have the selling features of its other Coast Guard Approved cohort, but not lacking on that priceless hidden je ne sais quoi factor. Not sure what that means - now you can impress people with your fun filled French fact, that you know that the term is something intangible that you can't put your finger on, and float at the same time.

- × Coast Guard approval - safety doesn't take a vacation
- × Room left in the checking account
- × Sizes: Small - XXL



Rib Hugger

Cosa Nostra Impact Jacket

Chad Sharpe's new signature impact jacket with Ronix - the Cosa Nostra - his garment of choice when jumping 100 feet off the kicker for this front cover shot. This lightweight, non Coast Guard approved jacket has a socially responsible conscience of reducing the impact on those unforeseen eye peelers. Featuring a semi side zip pullover with a magnetic zipper cover. You can't put a price tag on that kind of sex appeal.

- × 2 way stretch material with a new PU shell
- × Zippers and magnets baby
- × Chad Sharpe designed and ridden
- × Sizes: Small – XL



Yonderosa Impact Jacket

Remember that time you and your mates were on a week long wakeboard extravaganza? One of those camping nights, gazing at the stars, stirring some baked beans, sipping a cold one by the fire and your buddy blurted out. "You know what's wrong with wakeboarding - nobody has the sack to come out with a hunters orange/ camo impact jacket with a field whistle, compass, shotgun shell holders and not a care in the world if it's approved by the Guard. I am envisioning a hybrid/neoprene jacket. None of that pseudo orange neoprene crap - that stuff's weak." Well you know what? We were there and we were listening, and tell your boy to quiet down with his epiphanies if he doesn't want us to knock him off.

- × Nylon/Neoprene Shell
- × Front Zip 1 buckle closure
- × Reed Hansen design, tested, and approved
- × Sizes: Small - XL

Bill Impact Jacket

Last year, Bill got his feet wet and decided to jump into the fashion water parka world with his own signature no zip pull over design. The result was our best selling vest. Now featuring all 7 different Bill graphic ideas we came up with. Yes, if you look close, that is the Mr. Headroom making a slight appearance. Made from a thicker 3mm material with greater padding for those untimely bails. The Coast Guard might not have approved it, but our friend Bill from the urban discoteca gave his stamp of approval.

- × 4 way stretch material
- × Bill designed
- × Ridden by Adam Errington
- × Sizes: Small – XL



Type Vorn Impact Jacket

Parks Bonifay's rear zip elastic spinning assault garment of choice. Jumping out of helicopters, front boarding rails out of a pool at Radar Lake, this contact resistant, lightweight comfy little hot rod was PB's vest of choice while filming for his X Dance winning Documentary. The inner makings are a chic alternative to the daily wakeboard requirement - a rear zip super elastic spinning assault dress attire of choice.

- × 4 way stretch material
- × Rear zip pullover
- × Parks Bonifay designed and ridden
- × Sizes: Small - XL

Handle Selection

One Detachable Handle Ridden by Danny Harf

Created by Danny Harf - a unique anti-roll creation allows riders to interchange different diameter and shaped grips, while using one yoke. By loosening both ends, the handle grip can easily detach to switch out to one of our other 4 after market grips.

- × Nylon Detachable anti-roll system
- × Comes with a new allen wrench tool to remove and connect optional grips
- × New Fused Suction grip
- × 4mm thick molded handle grip
- × Three layers: EVA / 1 sheet Lycra / 1 sheet mesh
- × T6 lightweight aircraft aluminum dowel
- × Filled inside with EVA for floatation
- × Strung with 12-strand Japan/Holland Dyneema mix rope (stronger and smaller diameter)
- × Available in straight or "T" handle

*4 aftermarket grip options compatible with either Detachable Handle



Totem Detachable Handle Ridden by Chad Sharpe

Chad Sharpe's new signature retention device has all of the same features of the One Detachable yoke - with his new conforming grip.

- × Hide Grip
- × Ergo gel pad cushioning
- × Available in straight only

Frank Synthetic Wrap Handle Ridden by Adam Errington

Over extend your passing hand? No worries Bill's new creation will make sure you won't smack yourself. A softer anti-roll alternative to the conventional carbon design - with a fully wrapped PU constructed handle.

- × Fully wrapped with PU leather
- × Semi anti-roll
- × 4mm Memory Foam
- × Hide w/ infused rubber grip
- × T6 lightweight aircraft aluminum dowel
- × Filled inside with EVA for floatation
- × Strung with 12-strand Japan/Holland Dyneema mix rope (stronger and smaller diameter)
- × Available in straight only

Remington Synthetic Wrap Handle Ridden by Reed Hansen

Same features as the Frank Handle but with a look the boys at the shootin' range would be proud of.

Envoy Handle

Similar to the North without the 5mm Memory Foam.

- × T6 aluminum aircraft dowel
- × Filled inside with EVA for floatation
- × 3mm thick foam - smaller diameter
- × Hide Grip
- × Strung with 12-strand Japan/Holland Dyneema rope

Volt Handle Ridden by Parks Bonifay

T7 lightweight aircraft aluminum dowel. Less than half the weight of any of our other handles. The true spinning assault weapon of war.

- × Weighs just 8 ounces...
- × Fused Suction cup grip
- × 4mm thick molded handle grip
- × Three layers: EVA / 1 sheet Lycra / 1 sheet mesh
- × T7 lightweight aircraft aluminum dowel
- × Filled inside with EVA for floatation
- × Strung with 12-strand Japan/Holland Dyneema mix rope (stronger and smaller diameter)
- × Available in straight Only

North Handle

Our most popular handle over the years, testing in our lab at a breaking point of 1700 lbs. The original soft grip Hide material design.

- × T6 aluminum aircraft dowel
- × Inside filled with EVA for floatation
- × 5mm thick Memory Foam
- × Embossed Hide Grip w/ embroidered logo
- × Strung with 12-Strand Japan/Holland Dyneema rope
- × Thin gauged vinyl tubing



Frank Synthetic 80ft 6-Section Mainline

We could sit and tell you all of the performance advantages of our latest high-end mainlines but just hit pause on your background music and just marinate on this image for a second – it's a leather looking rope.

- × PU synthetic wrap cover – white w/ neon green print ink
- × Strung with 12-strand Japan/Holland Dyneema mix rope
- × Stronger and smaller diameter
- × Coils easily
- × 85ft total length including handle
- × One 60ft mainline
- × Three 5ft sections
- × Two 2 1/2ft sections
- × Frank ridden by Adam Errington
- × Remington ridden by Reed Hansen

Remington Synthetic 80ft 6-Section Mainline



Rx 80ft "Glow In The Dark" Mainline

A glow in the dark rigid mainline with a urethane coating, and a Dyneema weave. Means more time for hitting transfers instead of undoing knots.

- × New square shape, urethane coated "glow in the dark" cover
- × 100% Dyneema 12-strand braided core
- × Abrasion free, snag resistant cover
- × 85ft total length including handle
- × 5 - 5ft take off sections
- × One 60ft mainline
- × Three 5ft sections
- × Two 2 1/2ft sections



R8 80ft 6-Section Mainlines

A roomy tangle free 80 footer and a similar construction to the RX – just not as nocturnal

- × New square shape, urethane coated cover
- × 100% Dyneema 12-strand braided core
- × Abrasion free, snag resistant cover
- × 85ft total length including handle
- × 5 - 5ft take off sections
- × One 60ft mainline
- × Three 5ft sections
- × Two 2 1/2ft sections
- × Color options: Viva black, metal flake silver, One GP yellow, Ibex Magma orange, white



Solin Mainline

Similar tensile strength to the core series - just doesn't have the swimming skills without the neoprene inside.

- × 24-strand tensilon cover
- × 100% Dyneema core
- × 75ft total length including handle
- × 3-5ft take off sections
- × Color options: red/silver, black/silver

Core Mainline

A super stiff, 24 strand Dyneema weave with an inner neoprene core. She's a floater.

- × 24-strand tensilon cover
- × Outer core constructed of 100% Dyneema fibers
- × Neoprene inner core for flotation
- × UV resistance
- × 75ft total length including handle
- × 3-5ft take off sections
- × Color options: black/gold, white/silver

See women's page 13 for an additional colors



Hemp Mainline

Erik Ruck wants to be known as more than just an ex Pro Tour and World Champion. He always had bigger aspirations - the first rider to bring Hemp to the waterway.

- × Dyneema Core
- × Hemp braided jacket
- × 80ft total length including handle
- × 55ft mainline
- × 4 - 5ft Take off Sections



Combo 5.0

- × Prequel Handle
- × Hide Grip
- × R8 80 ft. mainline w/ 6 sections (Assorted colors)

Combo 4.0

- × Prequel Handle
- × Hide Grip
- × Solin 70 ft. mainline w/4 sections (Assorted colors)

Combo 3.0

- × Prequel Handle
- × Chef's EVA Grip
- × Solin hybrid PE 70 ft. mainline w/4 sections (Assorted colors)



Combo 2.0

- × Prequel Handle
- × Chef's EVA Grip
- × 60 ft. PE mainline w/4 sections
- × Also available in a "T" handle (Assorted colors)



Combo 1.0

- × Prequel Handle
- × TPR Grip
- × 60 ft PE mainline w/4 sections
- × Only available in a "T" handle (Assorted colors)



Kid's Combo

- × Shorter 14" length Prequel Handle
- × Narrow diameter Hide Grip
- × 60 ft PE mainline w/4 sections (Assorted colors)



Happy Hour Boat Bumper

Bring on the flotilla - that's what we call a big boat tie up.

- × 8" diameter X 18" long
- × Small inflatable valve
- × 4ft mooring line
- × Easy for storage when deflated

Webbing Boat Dock Ties

- × Adjustable in length from 3ft to 6ft



Surf Rope w/Handle

To chase the endless wave you only need 20 feet.

- × 20 ft PE mainline w/3 sections
- × 4 Section mainline with a little extra bungee give (Assorted colors)



Surf Rope - No Handle

- × 5 - 4 inch diameter knots with foam floats for an abrasion free riding grip

Traveling Utensils



Imagine if there was a board bag that magically wasn't categorized as a board bag at the airport because it looked like a golf bag? If that same bag wasn't considered oversized when you checked it in on the plane and saved the oversized bucks? They don't believe you that it's a golf bag – you open it up and we even threw in a portable driving range, complete with a green mat, and rubber tee box. Saving money while traveling and brushing up on your game at the same time – too easy.

- × Durable padded shell
- × Wheelie transportation with dual end carry handles
- × Zippered pockets
- × A fun conversation piece when your buddy says "I can't believe Ronix sold out and makes golf bags"

Featuring 3 really important "A chance to's"...

- × A chance to work on your follow thru with that new golf driver you just bought
- × A chance to work on your feeble grind at the local skate park with this new wheelie delight
- × A chance to make small talk with Emily when you bump into her at a pro tour and tell her you rock the same bag that she does

Links Edition Wheelie Padded Board Bag



All the same features as the other Links Bag – just the wheels have been substituted for 18 hole inspired shoulder straps.

Links Edition Backpack Straps Board Bag



A padded traveling den - roomy enough to fit all of your stash.

- × Durable padded shell
- × Shoulder strap
- × 2 external and 1 internal pockets
- × Available in green (A) and black (B)

Battalion Padded Bag



Other companies may claim their products are tighter – but ask yourself, are their boots the original baseless design that are lighter? We also have a really nice unpadded board bag at an affordable value.

- × Internal pocket

Collateral Bag



Twice as much padding as any of our board bags. We want to make sure your surf constructed Koal can get there safely.

- × Super durable padded shell
- × Shoulder strap
- × Fin Protector
- × External pocket

Dempsey Surf Bag



**SHORT SLEEVE
BELLY BUTTON PROTECTORS**

Vesta - Charcoal/Black Stripes
Uno - White/GP Yellow
Electric Collective - Heather Blue
Megacorp - Charcoal Slub
All Sizes are Small -XXL

DOME DEVICES

Road Trip - Black/Orange
7 1/8", 7 1/4", 7 3/8", 7 1/2", 7 5/8"
One - Charcoal/Black/Day Glow
7 1/8", 7 1/4", 7 3/8", 7 1/2", 7 5/8"
Icon - Black
S/M, L/XL
Forester New Era - Herringbone
7 1/4", 7 3/8", 7 1/2", 7 5/8"



**HOODIES
AREOLA PROTECTORS**

October Zip Up - Heather Blue
One Pull Over - Ash/Black
Tre' Zip Up - Charcoal/Black Stripes
All Sizes are Small -XXL





VISION HANDLE

A kids combo setup created for small hands and a line with some give.

- × Shorter 14" length
- × Prequel handle
- × Narrow diameter Hide grip
- × 60 ft PE mainline w/4 sections
- × (Assorted colors)

VISION

For the first 4 years at Ronix we made a full range of men's and women's boards. All the while our engineers were working with the next generation of riders on a shape to meet their riding needs. It is easy to take a wakeboard and scale it down to size and say it is a "kid's board". But that is not what our shredders were looking for. The Vision 120 is not based off any of our other boards, instead just features that make sense for them. A board that has softer outside molded in fins for easier surface turns, but still has a sharp top and inside fin shape for extra grip when needed. Longer and taller fins on the toeside allow a rider to stand in a more comfortable position. A 4-degree bevel means cleaner transitions and less edge catches, while a mellow, consistent 2.4" easy landing fast/stable rocker sets the pace of this ultimate kids specific shape, which now comes with our new Smooth Glass. A lighter, softer flexing glass designed for riders up to 120 lbs.

- × Wide tip/tail - easy starts, rides higher at slow speeds, gives riders larger sweet spot for take offs and landings
- × Mellow round radius fading bevel - sets a predictable smooth transitioned edge with little effort, doesn't require a steep edge angle to get speed
- × 4. Asymmetric molded outer fins - needed additional grip on your toeside as a rider's body is crossed up from the boat
- × 2 detachable fiberglass 1.75" hook fins provide all the grip and stability needed in choppy water conditions
- × Smooth Flex - a woven construction created for the next generation
- × Designed by Mike Ferraro and our junior development team

VISION SPECS

Size (cm)	Area (Square in)	Rocker Height (in)	Rocker Angle/Arc	Stance 6" Board & Pole (in)	Center Width (in)	Weight Range (lbs.)
120	674	2.4	8.4/feetly	16-20	15.8	Up to 120 lbs.



Safety doesn't take a vacation.

- A USCoA Life Vest for shredders 50-90 lbs.
- × 2 buckles & 1 zipper closure
- × Comfy all neoprene shell
- × Available in Youth size only

Our engineers spent a couple of seasons working with a group of shredders to design a true boy's boot from our baseless plate up - not just a scaled version of our men's line. The result was the first of its kind. Heel, arch and toe ramp placement for shredders sized 2-6 with our exclusive Stage 1 liner reducing our award winning boot's weight another 20%. The future of wakeboarding will appreciate this fully loaded, easy entry, comfortable new boot's construction.

- × Ronix's patent pending baseless system - the original low profile design has superior board control and is ultra light for reduced overall swing weight - often imitated never duplicated
- × New ultra lightweight Stage 1 Liner - no unnecessary swing weight, same Ronix comfort fit
- × Universal tongue - our most adjustable boot fitting multiple sizes
- × Built in L-bars improve heel hold
- × Articulating cuff - the boot flexes with the rider
- × Throw your screwdriver away with our new toolless mounting system
- × New low friction eyelets
- × Eco Innovation - no use of PVC solvents
- × Designed for the next generation of riders - not a scaled version of an adult foot

VISION SIZING	
US	2 - 6
UK	3.5 - 6
Europe	33 - 38
Japan	122 - 24.5



Kids Collection

August Vest

Safety doesn't take a vacation.
A USCGA Life Vest for girls
weighing 50-90 lbs.
x 2 buckles & 1 zipper closure
x Comfy all neoprene shell
x Available in Youth size only



August board

It is easy to take a wakeboard and scale it down to size and say it is a "kid's board". But that is not what our shredders were looking for. For the first 4 years at Ronix made a full range of mens and womens boards. All the while our engineers were working with the next generation of riders on a shape to meet their riding needs. The August 120 is not based off any of our other boards. Instead just features that make sense for girls. A board that has softer outside molded in fins for easier surface turns, but still has a sharp top and inside fin shape for extra grip when needed. Longer and taller fins on the toeside allow a rider to stand in a more comfortable position. A 4-degree bevel means cleaner transitions and less edge catches, while a mellow, consistent 2.4" easy landing fast/stable rocker sets the pace of this ultimate kid's specific shape, which now comes with our new Smooth Glass. A lighter, softer flexing glass designed for riders up to 120 lbs.

- x Wide tip/tail - easy starts, rides higher at slow speeds, gives riders larger sweet spot for take offs and landings
- x Mellow round radius fading bevel - sets a predictable smooth transitioned edge with little effort, doesn't require a steep edge angle to get speed
- x 4. Asymetric molded outer fins - needed additional grip on your toeside as a rider's body is crossed up from the boat
- x 2 detachable fiberglass 1.75" hook fins provide all the grip and stability needed in choppy water conditions
- x Smooth Flex - a woven construction created for the next generation
- x Designed by Mike Ferraro and our junior development team

AUGUST SPECS		Rocker Angle/Arc (in)	Stance 6" Board & Plate (in)	Center Width (in)	Weight Range (lbs.)
Size (cm)	Area (Square in)				
120	674	2.4	16-20	15.8	Up to 120 lbs.



August handle

A kids combo setup created for small hands and a line with some give.
x Shorter 14" length Prequel Handle
x Narrow diameter Hide grip
x 60 ft PE mainline w/4 sections
x (Assorted colors)



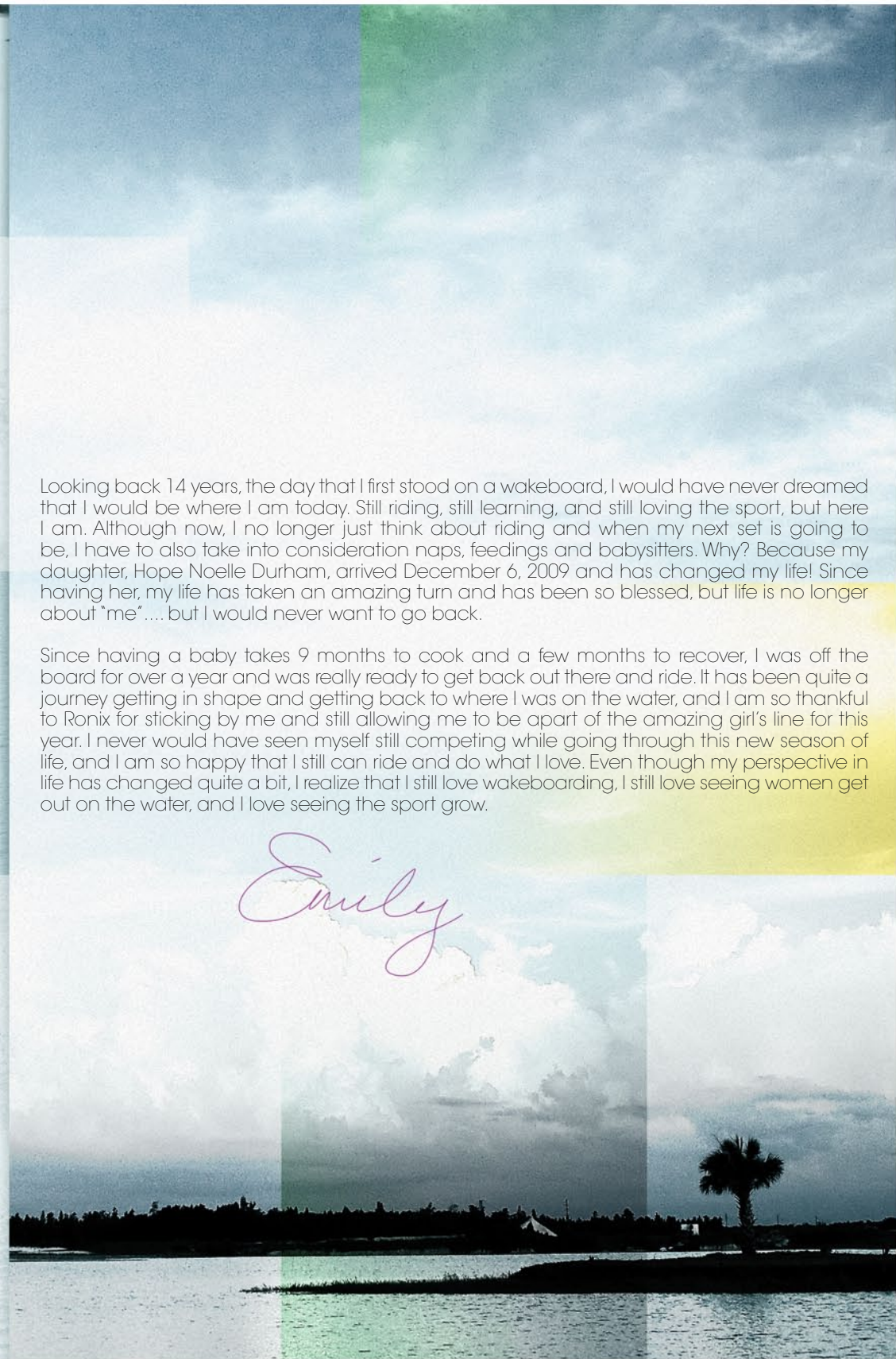
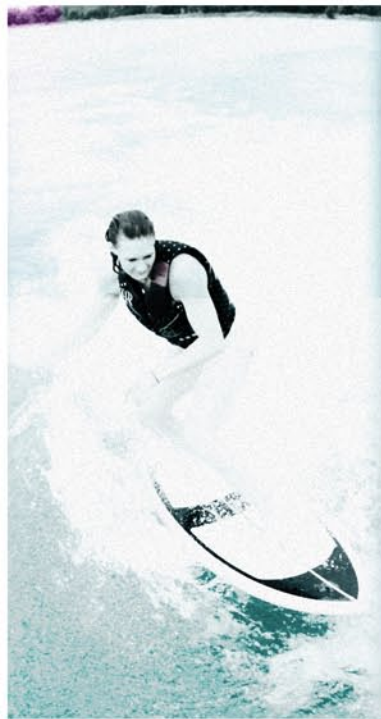
August boots



Our engineers spent a couple of seasons working with a group of shredders to design a true girl's boot from our baseless plate up - not just a scaled version of our women's line. The result was the first of its kind. Heel, arch and toe ramp placement for shredders sized 2-6 with our float-ing tongue design. This year we created a new ultra lightweight exclusive Stage 1 liner reducing our award winning boot's weight another 200%. The future of wakeboarding will appreciate this fully loaded, easy entry, comfortable new boot's construction.

- x Ronix's patent pending baseless system - the original low profile design has superior board control and is ultra light for reduced overall swing weight - often imitated never duplicated
- x New ultra lightweight Stage 1 Liner - no unnecessary swing weight, same Ronix comfort fit
- x Universal tongue - our most adjustable boot fitting multiple sizes
- x Built in J-bars improve heel hold
- x Articulating cuff - the boot flexes with the rider
- x Throw your screwdriver away with our new tool less mounting system
- x New low friction eyelets
- x Eco Innovation - no use of PVC solvents
- x Designed for the next generation of riders
- not a scaled version of an adult foot

AUGUST SIZING	
US	2 - 6
UK	3.5 - 6
Europe	33 - 38
Japan	122 - 24.5



Looking back 14 years, the day that I first stood on a wakeboard, I would have never dreamed that I would be where I am today. Still riding, still learning, and still loving the sport, but here I am. Although now, I no longer just think about riding and when my next set is going to be, I have to also take into consideration naps, feedings and babysitters. Why? Because my daughter, Hope Noelle Durham, arrived December 6, 2009 and has changed my life! Since having her, my life has taken an amazing turn and has been so blessed, but life is no longer about "me" but I would never want to go back.

Since having a baby takes 9 months to cook and a few months to recover, I was off the board for over a year and was really ready to get back out there and ride. It has been quite a journey getting in shape and getting back to where I was on the water, and I am so thankful to Ronix for sticking by me and still allowing me to be apart of the amazing girl's line for this year. I never would have seen myself still competing while going through this new season of life, and I am so happy that I still can ride and do what I love. Even though my perspective in life has changed quite a bit, I realize that I still love wakeboarding, I still love seeing women get out on the water, and I love seeing the sport grow.

Emily

Smooth Flex



Emily is the first to admit she isn't built like a guy, doesn't ride like 'em, or want a board crafted like her male counterparts. We spent this offseason comparing the stress Parks puts on a board vs. Emily. What we found is that Emily will never use the full flex of a traditional layup - so why make them that way? So our engineers went back to our factory and researched different weaves of glass and threw them into different models for Hayley Smith and Emily to try out. The results were really eye opening - by going to a softer layup girls were able to experience more board control, softer landings and just a smoother overall ride. New for this year all of our women's products come with this new lay up.

Faith Hope Love

Collection

RIDING STYLE // A collection of high-end women's products designed for the way women ride. Not even Emily rides the way guys do – Emily's new collection is created for every aspect of the true rulers of the waterway. The flex, sidecut, rocker and rail were shaped for the characteristics of a women's specific design. Riding with less resistance – plan to carve and get booted off the wake with less work.

Faith Hope Love Board

For 2010, Emily overhauled her collection with her second female specific signature deck. The Faith Hope Love has a slightly lowered hybrid rocker line blending speed, and a consistent smooth pop off the liquid transition, with a bigger sweet spot. A new wider/mellow profile with more effective edge in the water means that instead of the angle generating the speed into the wake, the speed and lift come from increased glide on the water and overall stability. Riding higher on the water means less work edging into a trick and more forward momentum on landings. The latest creation from the first lady of Ronix now comes with our Smooth Flex construction. New for this year, we went to a softer layup and our girls team noticed more board control, softer landings and just a smoother overall ride.

- × Full rail in the center of the board makes it more forgiving
- × Then blending to a harder rail design towards the tip/tail for increased glide speed and more stability while setting an edge
- × Thinnest profiled board in our line reduces swing weight and makes landings feel softer
- × Smooth Flex - a construction that flexes the way a girl needs it to
- × Krypto Cable - makes the sidewalls the strongest part of the board – not the weakest, along with a torsionally stiffer board
- × Mod Pour - this demanding alternative core is new for this year made from our exclusive blend of carbon and atoms
- × 4.6" deep molded in outer fins for those looking for a looser/faster feel
- × Artwork - UV clear top/Stephanie blue & pearl ink/ snakeskin inlaid aluminum emblem/silver foil
- × 2 fiberglass 1.0" fins
- × Emily Copeland Durham endorsed

Faith Hope Love Boot

The Faith Hope Love was made with a women's cut, flex, lean, and look and our new closed toe Stage 2 Liner - the best in non-heat moldable memory, with improved comfort, and unrivaled support. Emily's fashion forward boot was designed from the sole up on the foundation of a women's foot, not a scaled down version of the guy's. A look that is ready to grace the red carpet, and performance for a right hand double up at the end of the lake, from the leaders of footwear.

- × Ronix's patent pending baseless system compared to a conventional plate design is 1/3 lighter with reduced overall swing weight and 1/3 lower to the board for superior control
- × Our softest density closed toe model
- × New Stage 2 Liner - The best in non heat moldable memory with a 3-D molded tongue
- × Made from a women's wakeboard specific last – not a guess
- × Lasted with the most low profile and compact lasts eliminates excess material and delivers optimal energy transfer between boot and board
- × Double laces - a more customized fit
- × Built in J-bars improve heel hold
- × Throw your screwdriver away with our new tool less mounting system
- × Eco Innovation – no use of PVC solvents
- × Ridden By Emily Copeland Durham



FAITH HOPE LOVE SPECS

Size (cm)	Area (Square In)	Rocker Height (in)	Rocker Angle/Arc	Stance 6" Board & Plate	Center Width (in)	Weight Range (lbs.)
132	750	2.5	9.3/medium	19.5-23.5	16.4	Up to 160 lbs.
136	783	2.6	9.3/medium	20.5-24.5	16.6	Up to 175 lbs.

FLEX 6

FAITH HOPE LOVE SIZING

US	6 - 7	8	9	10
UK	3.5 - 4.5	5.5	6.5	7.5
Europe	36.5 - 37.5	38.5	40	41.5
Japan	22 - 23	24	25	26

Quarter 'Til Midnight Board

Australia's finest Hayley Smith worked with wakeboard coach Mike Ferraro, who arguably knows more about fluid dynamics than anybody out on the dock. They worked on a new shape for varying abilities, and styles to determine the universal characteristics a rider needs and blended them into one shape. The result was this new Smooth Flex constructed shape, which is being referred to as the best board he has created to date. This board has a 3-stage lift in the center, with a continuous outer rail. A rider can still get that explosive more vertical lift, but the faster outer rails push the board into the rider. You feel the speed of continuous and the float of 3-stage. If a rider comes in with a lot of angle, the board is reacting more to the outer continuous profile - feeling the added speed, coming in and flattening the board out as they hit the wake - the 3-stage kicks in. This is a series you don't have to really stand on to create a progressive cut from the sharp/hard edge on the tip/tail of the board, outside of the stance. The rounder radius bevel in the center of the board, inside of the stance, creates forgiveness. A legendary new all purpose shape from smooth/low maintenance carves, to wide open high speed cuts behind the boat, versatility on the cable for air tricks and our super wide stance option for extra board control at the cable.

- * Sharper center rail creates a quicker edge transfer that is more reliable in choppy water conditions, blends to a more vertical sidewall in the tip/tail allowing the board to ride higher on the water with more glide speed
- * 2 Traction channels in the middle - help with acceleration thru a turn and push the rider into the wake, 4 Traction channels in the tip/tail - create a more stable feel on landings
- * 4 Flutes in the tip/tail - designed for a cable rider to aid the traction of the fins with a cleaner lift with less pressure on air tricks allowing the board to flick out of the water and away easier
- * Variable Bevel - rounder radius bevel on the inside of a riders stance blending to a sharp bevel on the outside for a clean progressive edge transfer and hold
- * Versatile rocker line - depending on how a rider edges into the wake it will feel like a continuous with easy transitions and soft landings, or a 3 stage rocker board and a more upright pop
- * Smooth Flex - a construction that flexes the way a girl needs it to
- * Sintered Base - the most durable non stick compound we have ever tested on rails without loosing any glide speed on the water
- * Cable speed design - most surface area, and a sharper rail optimized for slower cable speeds
- * Artwork - UV Clear/ flake ink/iridescent foil/ the time emblem
- * 4 detachable 1.0" ramp fiberglass fins
- * Created with the all purpose female rider in mind

RIDING STYLE // Touch the sky with a new women's board that isn't determined by a riding style. The Quarter 'Til Midnight' is the first of its kind where a rider knows exactly how the board is going to react - you don't have to get used to the board, this new series will cater to your riding. A versatile shape behind varying boat wake angles, and the needs at a cable park, for any ability or riding style. Comes complete with our cable friendly sintered base material.


QUARTER 'TIL MIDNIGHT SPECS						
Size (cm)	Area (Square In)	Rocker Height (in)	Rocker Angle/Arc	Stance 6" Board & Plate	Center Width (in)	Weight Range (lbs.)
134	799	2.5	8.5/medium	19.5-25.5	17.2	Up to 175 lbs.
138	832	2.6	8.5/medium	20-26	17.4	150 lbs. and up

Halo Boot

Ladies buckle up! The Halo is the stiffest women's boot with our new exclusive high memory Stage 2 liner. A woman's cut, look, and flex that proves not all our high-end boots have to keep toes warm. Our premier open toe design - modeled from a female's foot.

- * Ronix's patent pending baseless system - the original low profile design has superior board control and is ultra light for reduced overall swing weight - often imitated never duplicated
- * New lightweight Stage 2 Liner - even more comfortable and less prone to packing out
- * Single lasted with the most low profile and compact last
- * Double laces - a more customized fit
- * 3-D Molded tongue blends comfort and performance
- * Articulating cuff - the boot flexes with the rider without any pressure points
- * Built in J-bars improve heel hold
- * Throw your screwdriver away with our tool less mounting system
- * Eco Innovation - no use of PVC solvents and partially crafted from recycled water bottles
- * Preferred by Hayley Smith



FLEX 		
HALO SIZING		
US	6 - 8.5	8 - 10.5
UK	3.5 - 6	5.5 - 8
Europe	36.5 - 39.5	38.5 - 42
Japan	22 - 24.5	24 - 27



RIDING STYLE //
The latest generation of boards understanding
that your body is working against the
boat on a toeside edge.

Krush Board

This new shape and women's specific layup allows a rider to edge more effectively into both sides of the wake - redefining the demands needed for toe/heelside versatility. Gone are the days of leaving the wake's transfer in a unnatural position. The new Krush recognizes that your body is crossed up riding toeside, and takes this into consideration with the design of the rocker, fin shape/placement, and new sharper profile allowing the rider to point the board with maximum grip to the wake without requiring excessive attack angle. The design of the heelside was created for a rider facing the boat with a more natural position pointing the board to the wake. Who said asymmetrical was only for entry level riders? Many contests have been won on previous generations - a series with no limits takes features from several boards in our line. The 2011 Krush - a platform to develop your riding style without any restrictions.

- × Toeside rail is thinned out to sit deeper in the water creating additional grip from this sharp profile
- × Toeside fins are deeper, longer and closer to the rail for a strong/stable edge hold
- × Heelside rail starts off softer/fuller for a mellower transition, then blends to a more vertical sidewall with less resistance on the water
- × Heelside fins are shorter and further from the rail for a quicker release on spinning tricks
- × 4 molded asymmetric fin shape track true in a straight line, but break free easier with more float in a side slide position
- × New Smooth Flex lay up - crafted for the needs a girl puts into a board - not a dude
- × New wider profile creates a bigger sweet spot riding in any water condition
- × Artwork – sublimated iridescent top/purple chrome foil
- × 2 fiberglass 1.7" fins
- × Designed by Mike Ferraro and our development team



KRUSH SPECS						
Size (cm)	Area (Square in)	Rocker Height (in)	Rocker Angle/Arc	Stance 8" Board & Plate (in)	Center Width (in)	Weight Range (lbs.)
128	745	2.4	8/medium	18-24	16.5	Up to 160 lbs.
134	781	2.5	8/medium	19.5-25.5	16.7	Up to 175 lbs.



Luxe Boot

A comfy, new Stage 1 foam boot, with an articulating shell transfers more energy to your ride without any hot spots. Designed with the every day rider in mind, our most popular women's boot was revamped for this season reducing the weight of our already sub 2 lb. boot another 20%. A new ultra light liner handcrafted exclusively by Ronix. A high performance adjustable boot fitting multiple sizes without any pressure points found in a traditional one piece constructed boot. Support you would expect from a high-end boot, ease of entry that will have you finishing that last minute text while you slip into them.

- × Ronix's patent pending baseless system - the original low profile design has superior board control and is ultra light for reduced overall swing weight - often imitated never duplicated
- × New ultra lightweight Stage 1 Liner - no unnecessary swing weight, same Ronix comfort fit
- × Universal tongue - our most adjustable boot fitting multiple sizes
- × Built in J-bars improve heel hold
- × Articulating cuff - the boot flexes with the rider
- × Throw your screwdriver away with our new tool less mounting system
- × New low friction eyelets
- × Eco Innovation - no use of PVC solvents
- × Designed with the everyday female rider in mind



FLEX 4

LUXE SIZING		
US	6 - 8.5	8 - 10.5
UK	3.5 - 6	5.5 - 8
Europe	36.5 - 39.5	38.5 - 42
Japan	22 - 24.5	24 - 27

The Women's Koal Surfboard

The 4' 10" Koal is the premier high-end, fast gliding, surf constructed women's edition for us freshies brought to you by the creators of the original compression molded wake surfboard. The past decade of designing wake surfboards has resulted in a refined version of our hard carving Koal series. This speedy shape rides even higher on the water with a new full profile and a thicker, more buoyant surf constructed core. Inspired by our favorite fish profiled board, named after our favorite black sand beach, and has only one function – throw the deck on rail. The Koal's shape and construction is a perfect ride for inlanders looking for the best in wake slashing performance. Throw your wakeboard fin screws away - our new Koal series now comes with cleaner profiled fins that have a fin box recessed right into the board.

- × Machined EVA top deck with built in wedge
- × The quickest rocker line, construction, profile and rail design we have ever made
- × 3 new surf specific 2.9" bottom mount fins
- × Surf constructed - lighter, faster, more buoyant, and yes more fragile (handle with care)
- × Inspired by the First Lady of the waterway



WOMEN'S KOAL SPECS

Size	Area (Square In)	Rocker Height (in)	Rocker Angle/Arc	Center Width (in)	Weight Range (lbs.)
4' 10"	867	3.1 nose - 0.2 tail	26.5/late	21	Any Size

Women's Extrax



Muse Life Vest

For female shredders that want to ride as hot as they look. This women's specific Coast Guard approved vest fits snug to a rider's chest with an anatomical cut, 2 buckles and one zipper closure. Built in flex segments and oversized armholes for extra mobility on handle passes and water resistant neo skin panels.

- × Coast Guard approval - safety doesn't take a vacation
- × Sizes: Small – XL

Chest Sizing

SIZE	MEASUREMENT
X-Small	27"-29"/69-74cm
Small	30"-33"/76-84cm
Medium	34"-36"/85-92cm
Large	37"-39"/93-99cm
X-Large	40"/100cm +

Coral Impact Jacket

A fashionable solution to the daily wakeboard requirement. The Coral is a lightweight non Coast Guard approved impact jacket made with a super comfortable/elastic neoprene material.

- × 4 way stretch material
- × Rear zip pullover
- × Color: Dusty Rose
- × Sizes - XS – XL



Dawn Padded Bag

You wouldn't want your new Faith Hope Love Collection to get dinged up would you? Smaller dimensions - scaled to fit any board/boot setup in our women's line.

- × Durable padded shell
- × Shoulder strap
- × 2 external and 1 internal pockets

Prestige Package

Prestige 70' Mainline

Similar tensile strength to the core series - just doesn't have the swimming skills without the neoprene inside.

- × 24-Strand Tensilon Cover
- × 100% dyneema core
- × 75ft total length including handle
- × 3 - 5ft take off sections
- × See men's page 62 for additional colors



Prestige Handle

One of our best selling grips - made with a smaller/women's diameter handle.

- × T6 aluminum aircraft dowel
- × Pencil floats for flotation
- × 2.5mm Thick Foam – smaller diameter
- × Suede Grip w/ Embroidered logo
- × Strung with 12-Strand Japan/Holland Dyneema Rope



R8 80' Mainline

A roomy tangle free 80 footer with a similar construction to the RX – just not as nocturnal.

- × New square shape, urethane coated cover
- × 100% Dyneema 12-strand braided core
- × Abrasion free, snag resistant cover
- × 85ft total length including handle
- × 5 - 5ft take off sections
- × One 60ft mainline
- × Three 5ft sections
- × Two 2 1/2ft sections
- × Color options: metal flake silver, white
- × See men's page 62 for additional colors



70' Core Mainline

A super stiff, 24 strand Dyneema weave with an inner neoprene core. She's a floater.

- × 24-Strand Tensilon cover
- × Outer core constructed of 100% Dyneema fibers
- × Neoprene inner core for flotation
- × UV resistance
- × 75ft total length including handle
- × 3 - 5ft take off sections
- × Color Options: pink/black
- × See men's page 62 for additional colors



Lexa V Neck

Black/Pink

- × Available Sizes: Small-Large



Midnight Hoody

Black/Cyan

- × Available Sizes: Small-XL



Ronix
2011 WOMEN'S COLLECTION